

# Sybase Installation Guide

Version 12



## Sybase Installation Guide

All efforts have been made to ensure the accuracy of the information presented in this format. However, should any errors be detected, Datacolor appreciates your efforts to notify us of these oversights.

Changes are periodically made to this information and are incorporated into forthcoming versions. Datacolor reserves the right to make improvements and/or changes in the product(s) and/or program(s) described in this material at any time.

© 2009 Datacolor. Datacolor and other Datacolor product trademarks are the property of Datacolor.

Microsoft and Windows are either registered trademarks of Microsoft Corporation in the United States and/or other countries.

To obtain information on local agents, contact either of the offices listed below, or visit our website at [www.datacolor.com](http://www.datacolor.com).

### Support Questions?

If you need help with a Datacolor product, please contact one of our top-rated technical support teams located around the world for your convenience. You can find contact information below for the Datacolor office in your area.

#### Americas

+1.609.895.7465  
+1.800.982.6496 (toll-free)  
+1.609.895.7404 (fax)  
[NSASupport@datacolor.com](mailto:NSASupport@datacolor.com)

#### Europe

+41.44.835.3740  
+41.44.835.3749 (fax)  
EMASupport@datacolor.com

**Asia Pacific**

+852.2420.8606  
+852.2420.8320 (fax)  
ASPSupport@datacolor.com

**Or Contact Your Local Representative**

Datacolor has representatives in over 60 countries. For a complete list, visit  
[www.datacolor.com/locations](http://www.datacolor.com/locations).

Manufactured by Datacolor  
5 Princess Road  
Lawrenceville, NJ 08648  
1.609.924.2189

Committed to Excellence. Dedicated to Quality. Certified to ISO 9001 in Manufacturing  
Centers Worldwide.

# Contents

<b>SYBASE INSTALLATION GUIDE .....</b>	<b>3</b>
INTRODUCTION.....	3
<i>Datacolor Software Installation Components .....</i>	<i>3</i>
INSTALLATION PROCEDURE SUMMARY .....	4
STANDALONE SYSTEM .....	4
LOCAL AREA NETWORK (LAN) .....	5
<i>Server Installation .....</i>	<i>5</i>
<i>Client Installation.....</i>	<i>5</i>
TERMINAL SERVER/CITRIX INSTALLATION .....	6
<i>Terminal Server Install Mode.....</i>	<i>6</i>
<i>Single Server Installation Procedure .....</i>	<i>8</i>
<i>Multiple Server Installation Procedure.....</i>	<i>8</i>
<b>DETAILED INSTALLATION INSTRUCTIONS.....</b>	<b>10</b>
OVERVIEW.....	10
<i>Sybase Installation Menu .....</i>	<i>10</i>
<i>Sybase Components .....</i>	<i>11</i>
<i>Vista or Windows 7 Installation Exceptions.....</i>	<i>11</i>
SYBASE CLIENT INSTALLATION .....	12
SYBASE SERVER INSTALLATION.....	14
<b>APPENDIX .....</b>	<b>21</b>
OVERVIEW.....	21
A. TERMINAL SERVER/CITRIX SUPPLEMENTAL INFORMATION .....	21
<i>Overview.....</i>	<i>21</i>

<i>Terminal Server Install Mode</i> .....	22
<b>B. CREATE THE SYBASE DATABASE SERVICE .....</b>	<b>23</b>
<i>Creating a New Service</i> .....	23
<i>Database Parameters</i> .....	31
<b>C. UPDATING THE ODBC DSN .....</b>	<b>32</b>
<i>Overview</i> .....	32
<i>Procedure to Update the ODBC DSN for LAN or Terminal Server</i> .....	32
<b>D. UPDATE THE SYBASE DATABASE SERVICE .....</b>	<b>36</b>
<b>E. UNLOAD AND RELOAD DATABASE .....</b>	<b>38</b>
<i>Rebuild Database on Standalone Systems</i> .....	38
<i>Rebuild Database on Networked Systems</i> .....	39
<i>Procedure for Using Datacolor Batch Files to Unload/Reload a Networked Sybase V12 Database</i> .....	39

# Sybase Installation Guide

---

## Introduction

Datacolor programs use Sybase Adaptive Server Anywhere for database management. Datacolor programs can be installed on standalone computers, on a local area network (LAN) and in terminal server or Citrix environment. This document provides installation instructions for new systems.

If you are upgrading an existing Datacolor system, please refer to the upgrade document "Datacolor Upgrade Guide".

After Sybase is installed, you must install each of the Datacolor applications programs that you will be using.

## Datacolor Software Installation Components

The Datacolor Main Installation Menu includes the Sybase installation:

- **Sybase USB.** Installs the database management software, Sybase Adaptive Server Anywhere. This software must be installed first.

**Please review this guide carefully before you start the system installation.**

---

## Installation Procedure Summary

Datacolor software is typically installed in one of three common system configurations:

- Standalone System
- Local Area Network
- Terminal Server/Citrix Network

A summary of the installation steps for these configurations is presented below. Detailed information regarding these system configurations is included in other sections of this guide. An electronic copy of the installation instructions for each Datacolor program is included on the program USB.

### NOTES

**Restart your system before installing the software.** This is done to clear the memory of any modules that might interfere with the program installation or upgrade.

---

## Standalone System

This is a dedicated, single-user system that does not share the database. The Sybase database server and the Datacolor applications software is installed on the same computer. To install on a standalone system, follow these steps:

1. Insert your installation USB, browse to Menu.exe and open. The Main Installation menu should appear automatically. Select **Install Sybase 12**. From the Sybase Installation Menu, select **Standard Client Installation** and follow the prompts. For step-by-step instructions, see also *Detailed Installation Instructions, Sybase Client Installation in this guide*.
2. After Sybase has been installed, return to the Main Installation menu and select the option to install the specific program. *For step-by-step instructions, see also the Installation Guide for the specific application..*

---

## Local Area Network (LAN)

This is a group of systems that share a common database. The Datacolor application software is installed on each client machine, and the database is located on a server that can be accessed by all of the client computers.

**NOTE:** To simplify the installation, we recommend that you complete the server installation first.

### Server Installation

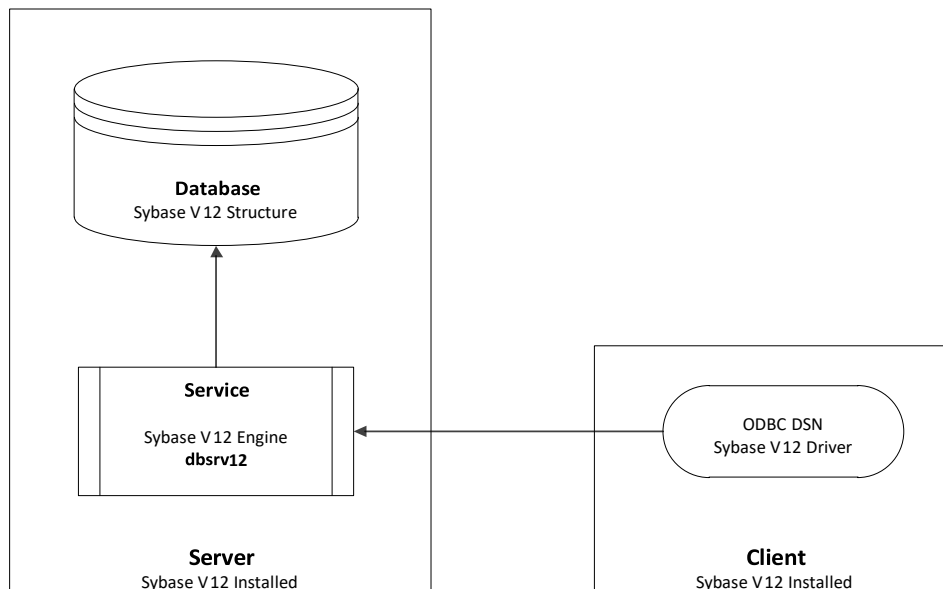
This installation procedure is performed on the server computer.

1. Insert your installation USB, browse to Menu.exe and open. The Main Installation menu should appear automatically. Select **Install Sybase Server**. From the Sybase Installation Menu, select **Standard Client Installation** and follow the prompts. For step-by-step instructions, see also *Detailed Installation Instructions, Sybase Client Installation in this guide*.
2. **Create a Windows database service** for the Sybase Adaptive Server program. For step-by-step instructions, see also Appendix; Create the Sybase Database Service in this guide.

### Client Installation

This installation procedure must be repeated for each client computer on the network.

1. Insert your installation USB, browse to Menu.exe and open. The Main Installation menu should appear automatically, **Standard Client Installation** from the installation menu and follow the prompts. For step-by-step instructions, see also Detailed Installation Instructions, Sybase Client Installation in this guide.
2. **Install each Datacolor Program**. For step-by-step instructions, see also the Installation Guide for the specific application. This can be accessed from the Installation menu for each program.
3. **Modify the ODBC connection on each client computer**. This directs the program to look for the database on the network server. For step-by-step instructions, see *Updating the ODBC DSN in the Appendix in this guide*.



---

## Terminal Server/Citrix Installation

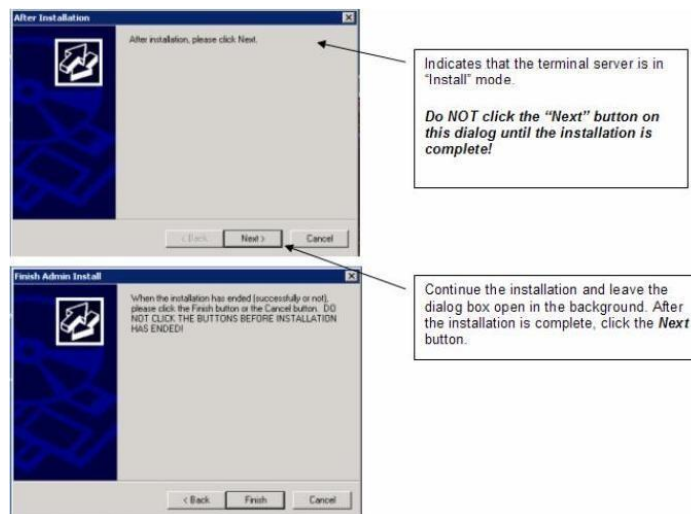
In a terminal server environment, the application programs are installed on a central server, and multiple users can run the Datacolor application programs simultaneously while sharing a common database. Each user runs a copy of the application program in a private session on the server. The database server can be installed on the same server as the application programs (single server) or it can be installed on another server (multiple server) in the network.

### NOTE

Because of a limitation in the Windows 3.1 Installer, the complete installation cannot be done from a remote desktop connection. You **must** install from the server console if possible. If this is not practical, you can copy the installation to the server and install from there.

## Terminal Server Install Mode

When you install an application on a terminal server, the server must be in *Install* mode. This makes the installed application available to all terminal server clients. The terminal server should automatically switch to *Install* mode. You will know that you are in *Install* mode when the *After Installation* dialog box displays.



### NOTE:

The server must be in Install mode for the installation of the Sybase software, and for the installation of each Datacolor application program.

### Manually Setting Install Mode

To change to install mode or to see what mode you are in, use the following commands. At a command prompt run the following command:

**change user /query**

This will return which mode is enabled.

To switch to install mode, run the following command:

**change user /install**

To switch to execute mode, run the following command: **change**

**user /execute**

---

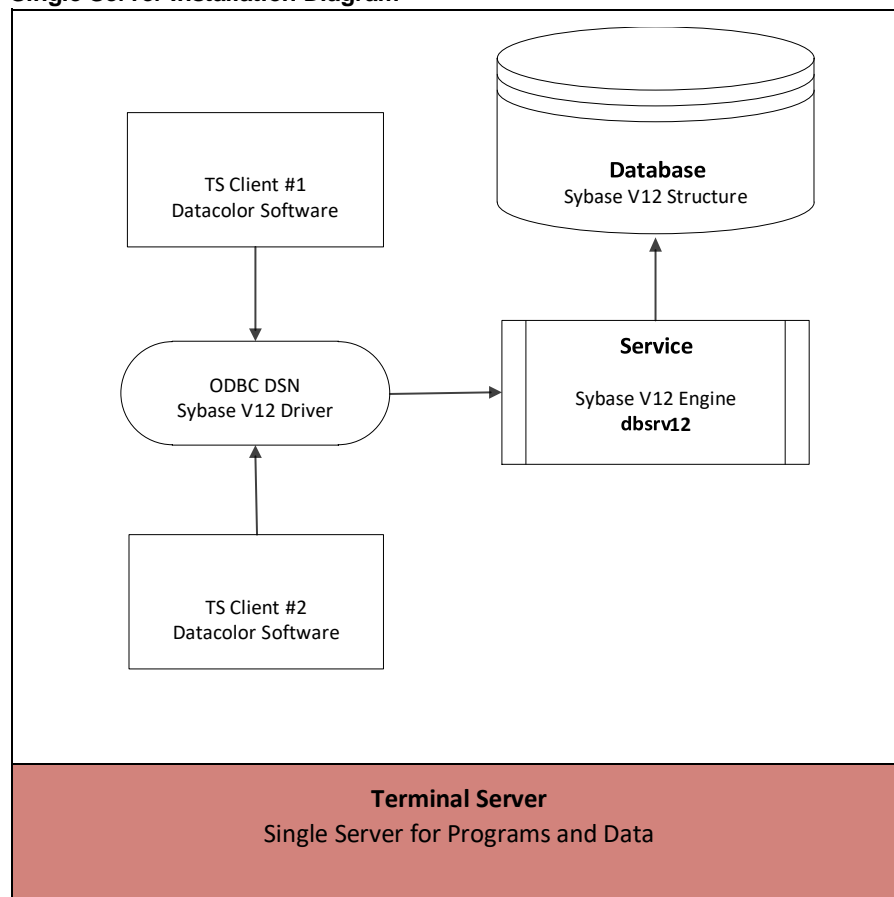
Note: You should be in install mode for any program installation. After installing programs, you should switch to execute mode.

## Single Server Installation Procedure

In this configuration, the applications programs and database server are installed on the same server.

1. Insert your installation USB, browse to Menu.exe and open. The Main Installation menu should appear automatically, select **Install Sybase Server** from the installation menu and follow the prompts. For step-by-step instructions, see also the Detailed Installation Instructions, Sybase Server Installation in this guide.
2. **Install** each of the **Datacolor programs**. For step-by-step instructions, see the Installation Guide for the specific application.
3. **Create a Windows service** for the Sybase Adaptive Server program. For step-by-step instructions, see also Appendix, Create the Sybase Database Service in this guide.
4. **Modify the ODBC connection** to look for the database on the network. For step-by-step instructions, see also Appendix, Updating the ODBC DSN in this guide.

Single Server Installation Diagram



## Multiple Server Installation Procedure

In this configuration, the applications programs are located on one server, and the database is located on a different server. You must install the *Sybase Adaptive Anywhere* software on both the application server and the database server.

- On the **applications program server**, install the **Sybase Client software**. See also Detailed Installation Instructions, Sybase Client Installation in this guide for step-by-step instructions.



- On the **database server**, install the **Sybase Server software**. See also *Detailed Installation Instructions, Sybase Server Installation in this guide for step-by-step instructions*.

### Database Server Installation

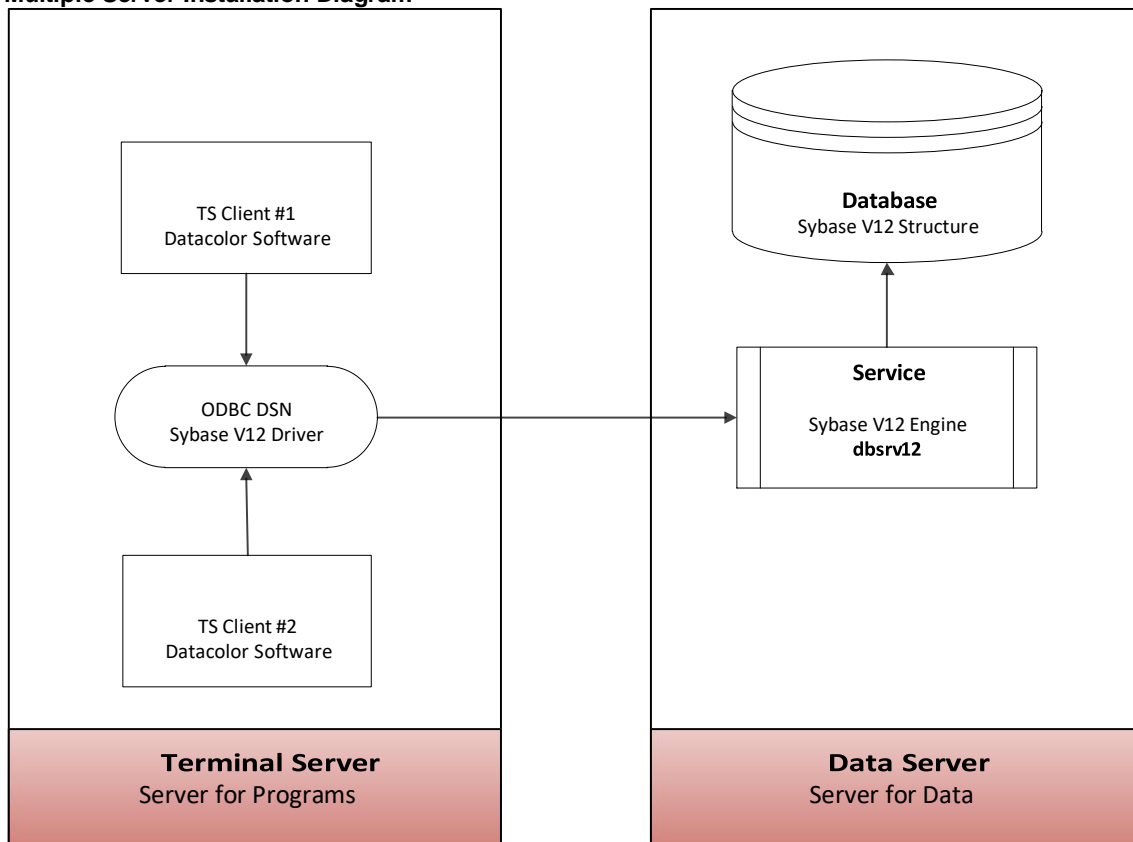
1. Insert your installation USB, browse to Menu.exe and open. The Main Installation menu should appear automatically, select **Install Sybase Server** and follow the prompts. For step-by-step instructions, see also *Detailed Installation Instructions, Sybase Server Installation in this guide*.
2. **Create a Windows database service** for the Sybase Adaptive Server program. For step-by-step instructions, see also *Appendix, Create the Sybase Database Service in this guide*.

### Applications Program Server Installation

1. Insert your installation USB, browse to Menu.exe and open. The Main Installation menu should appear automatically and select **Standard Client Installation**. For step-by-step instructions, see also *Detailed Installation Instructions, Sybase Client Installation in this guide*.
2. **Install** each of the **Datacolor programs**. For step-by-step instructions, see also the *Installation Guide for the specific application*. This can be accessed from the Installation menu for each program.
3. **Modify the ODBC connection**. For step-by-step instructions, see also *Appendix, Updating the ODBC DSN in this guide*.

See also *Appendix, Terminal Service/Citrix Supplemental Information*.

**Multiple Server Installation Diagram**



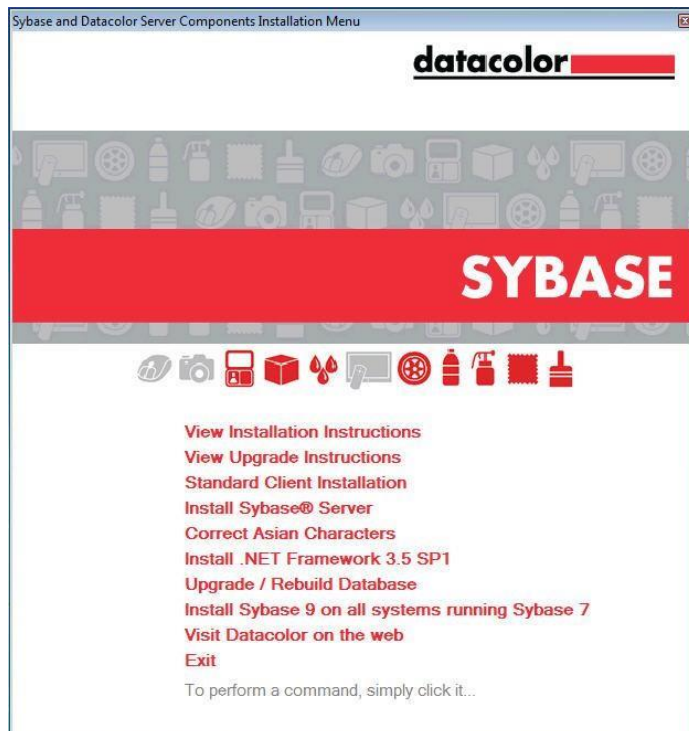
# Detailed Installation Instructions

## Overview

The Sybase USB provides the database management program and related services for the Datacolor application suite. This section provides step-by-step instructions to install Sybase 12 for both the *Client* and *Server* installations. Screens are included, and instructions are added for those steps that require specific input from the user to successfully complete the installation.

## Sybase Installation Menu

The Sybase DVD installation includes the following menu choices:



- **View Installation and Upgrade Instructions.** Displays an electronic version of the installation and upgrade instructions.
- **Standard Client Installation.** Installs the database management software and related drivers on a stand-alone computer, or on a client computer that is part of a local area network (LAN). This option is used for all standalone systems.
- **Install Sybase Server.** Installs the database management software on a server that will host a shared database. This option is used to install the database management software on a server in either a local area network, or in a terminal server environment.
- **Correct Asian Characters.** Used when upgrading existing Datacolor Match Textile Multibyte databases from Sybase V9 to Sybase V12. Please refer to the Datacolor Upgrade Guide (Appendix – Upgrading Datacolor Match Textile Multibyte Systems) for information.

- **Install .Net Framework 3.5 SP1.** Installs the .NET Framework 3.5 SP1 on a System. This option is used if Sybase 12.01 and EBF 3994 Rev4 are already installed and .Net Framework 3.5 SP1 does not already exist on the system.
- **Upgrade/Rebuild Database.** When this option is selected, the existing database is unloaded and a new database is created and reloaded.
- **Install Sybase 9 on all systems running Sybase 7.** This option is used to install Sybase V9 on existing Datacolor systems that are currently running Sybase V7. This is only required for an upgrade case and only on systems running Sybase V7. Please refer to the document "DatacolorUpgradeGuide" for more information.

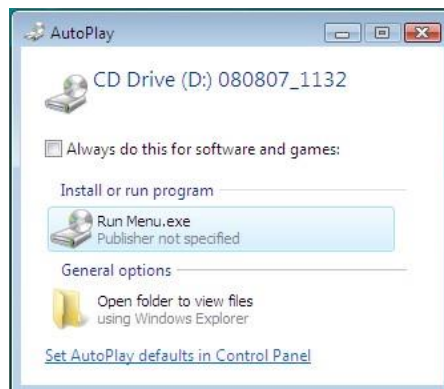
## Sybase Components

During the installation procedure, you will see progress messages identifying the components being installed. These components include:

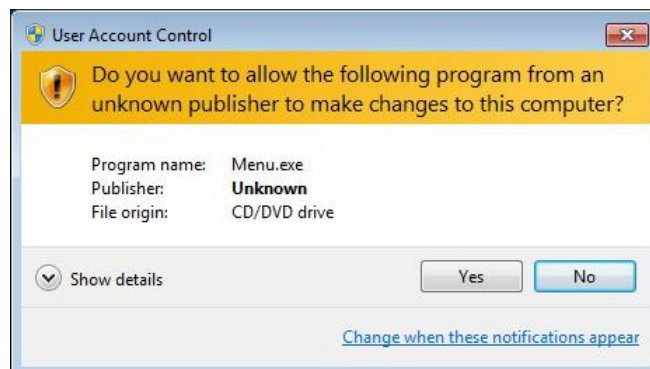
- **Windows Installer 3.1.** The Windows Installer is an engine for the installation, maintenance, and removal of software on Microsoft Windows systems. This will be installed if it does not already exist on the system.
- **Microsoft .NET Framework 3.5.** The Microsoft .NET Framework is a software component that must be present. It provides common program modules and manages the execution of programs written specifically for the framework. This will be installed if it does not already exist on the system.
- **Sybase Adaptive Server Anywhere V12.0.1 OEM Edition**
- **Sybase Adaptive Server Anywhere V12.0.1.3994 Rev4 Update**

## Vista or Windows 7 Installation Exceptions

When you insert the Sybase 12 CD, two prompts are display. You must confirm each prompt to launch the installation.



- **Auto Play.** Click **Run Menu.exe** to start the installation. A second confirmation is displayed:



- **User Account Control.** Click **Yes** to start the Sybase 12 installation.

---

## Sybase Client Installation

1. Insert your installation USB, browse to Menu.exe and open. The Main Installation menu should appear automatically.

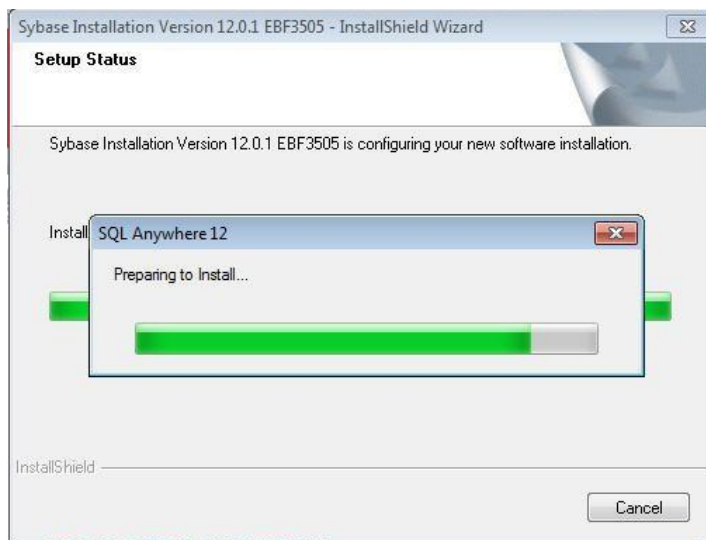


2. Select **Install Sybase 12**. The installation menu displays:



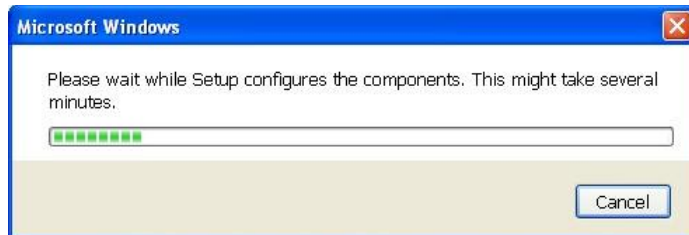
3. Click on Standard Client Installation.

The installation will launch:



This installation procedure runs automatically, copying files and setting the appropriate configurations. The program will report the various functions as it performs them.

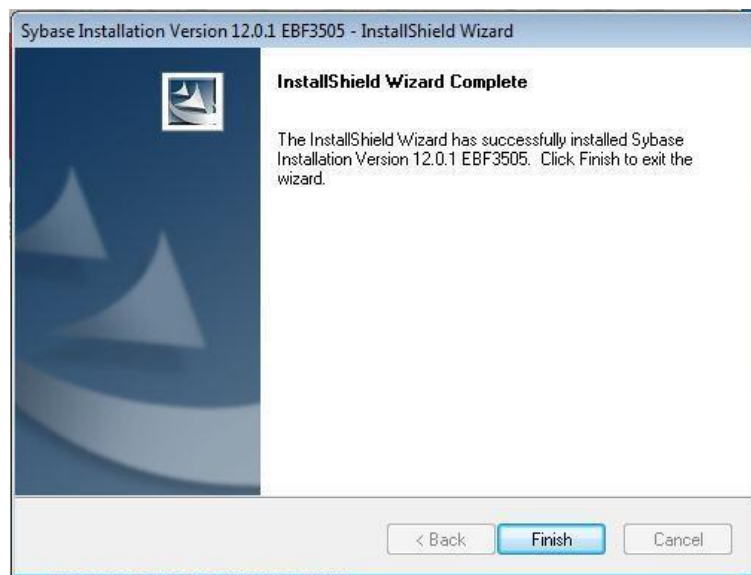
.NET Framework 3.5 SP1 is installed only if it is not installed already.



**NOTE:**

If you are updating an existing system running Datacolor MATCH<sup>TEXTILE</sup>, you will see messages prompting you to backup the existing database.

You will be notified when the installation is completed:

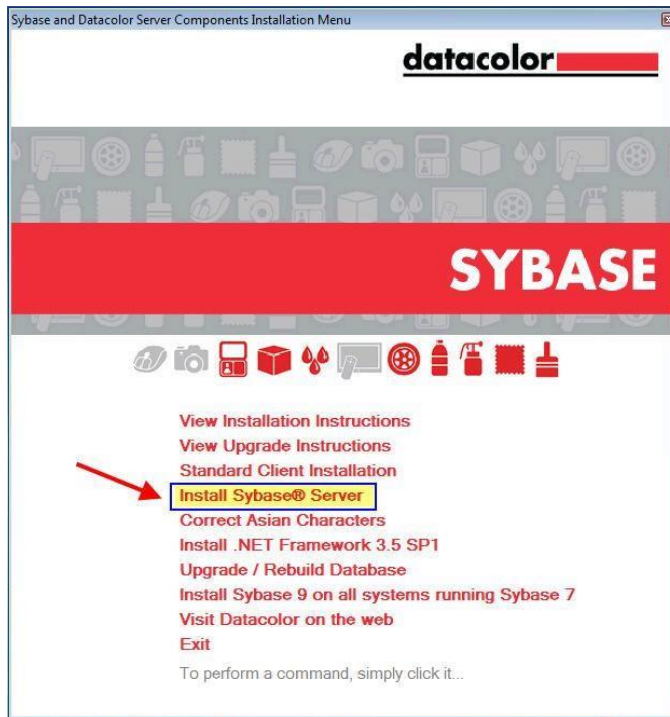


4. Click **Finish**.

---

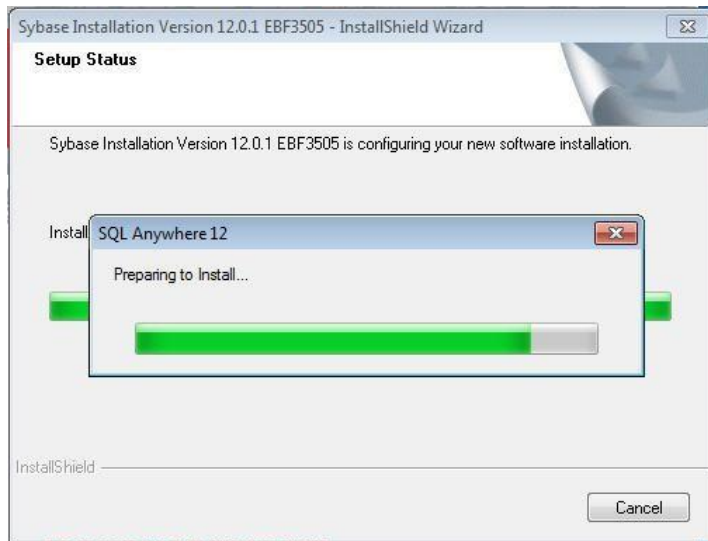
## Sybase Server Installation

1. Insert your installation USB, browse to Menu.exe and open. The Main Installation menu should appear automatically. Select **Install Sybase 12**.

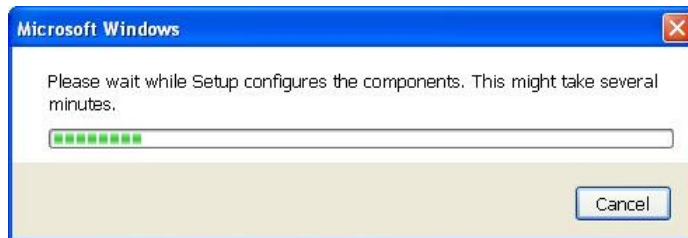


2. Click on Install Sybase Server.

The installation will launch:



NET Framework 3.5 SP1 is installed only if it is not installed already.



The Welcome screen for Sybase is displayed.

The Sybase installation automatically begins:





1. Click **Next**.

You will be prompted to accept the license agreement:



To accept the software agreement:

- Select the correct **country**
- Select the option to **accept** the licensing terms.

2. Click **Next**.

You will be prompted to enter the Registration key. The default registration key is already set.

**Do not modify the displayed Registration key under any circumstances:**



3. Click **Next**.

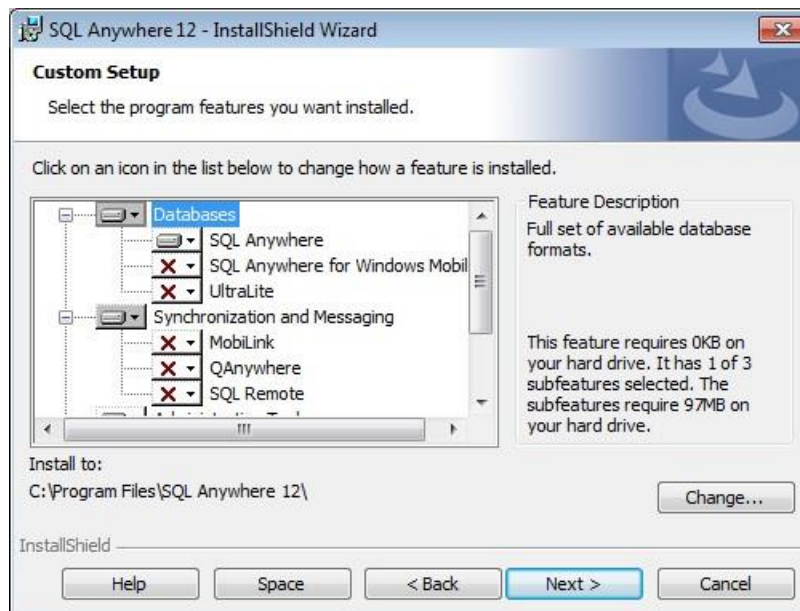
The screen containing the server license information is displayed:



- ☐ **Name.** Enter the user name.
- ☐ **Company.** Enter the company name.
- ☐ **Licensed Unit.** Enter the total number of Datacolor product licenses you have purchased.

4. Click **Next** to accept the default *Server Licensing Information*.

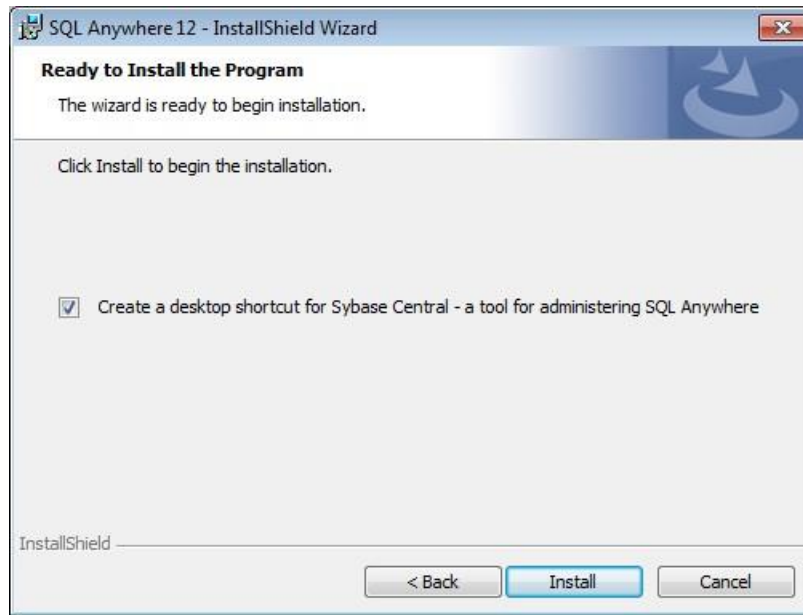
The installation identifies the Sybase components to be installed:



This screen displays the default selections. It is not necessary to make any changes to this screen.

5. When you have completed these entries, click **Next**.

The Ready to Install the Program screen is displayed. A desktop shortcut for Sybase Central is pre-selected.



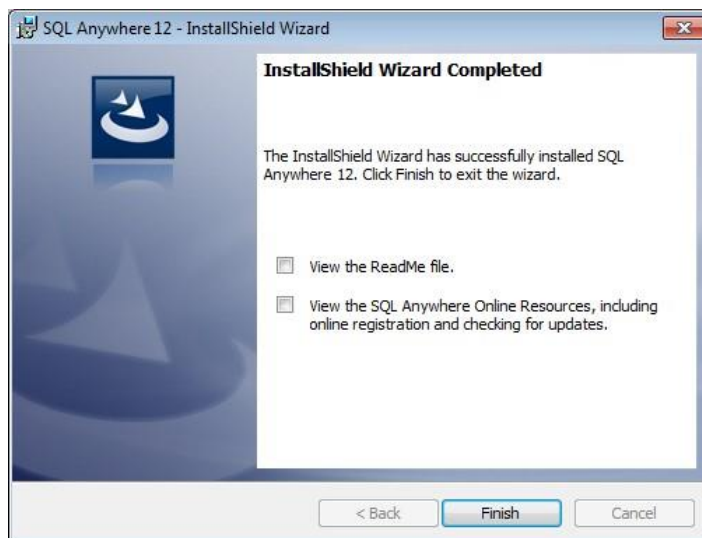
6. Click **Install** to begin the installation.

The program will continue with the installation, and display progress screens as it completes tasks related to the installation:



This installation procedure runs automatically, copying files and setting the appropriate configurations. The program will report the various functions as it performs them.

When the copy operation is complete, the program prompts you regarding access to additional reference materials (**remove the checks**):

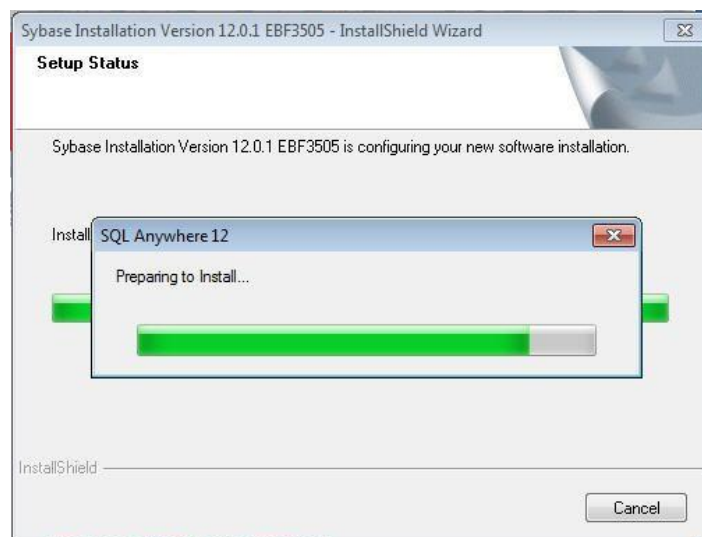


**Do not enable the SQL Anywhere Online Resources.**

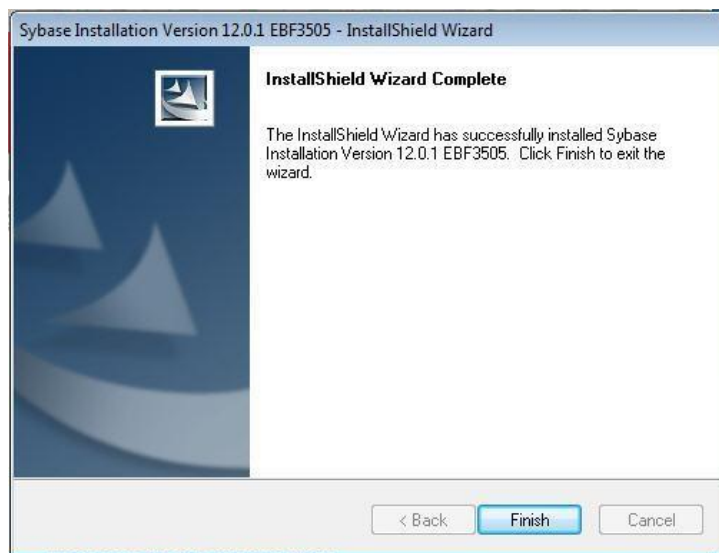
7. Make the appropriate selections and Click **Finish**.

The installation is **not** complete. The Sybase EBF Update will now install!

An update (EBF) to Sybase is now installed:



When the update is finished, the final installation screen is displayed:



8. Click **Finish**.

## APPENDIX

---

### Overview

This appendix is a collection of reference information providing additional technical detail to install and configure the database management software for use with Datacolor applications software.

---

### A. Terminal Server/Citrix Supplemental Information

#### Overview

Terminal Server is a Microsoft product that allows multiple users to run simultaneously from a central server. The programs are installed on a central computer or *server*. Multiple users connect to the server via an RDP Client or an Internet connection, and can simultaneously run the same Datacolor program. When this configuration is used, licenses are issued for the server, and for a specified number of *users*.

In a Terminal Server configuration, each Datacolor program is installed once on the server. Each user connects to the Terminal Server and sees their own Windows desktop on their client PC. When a Datacolor program is launched, a private session of the software is started on the server. The client COM ports and printer ports will be redirected to the server so they can measure samples locally and also print locally.

For terminal server systems, this guide assumes that Windows Server 2003, Windows Server 2008 or Windows Server 2008 R2 is installed on the server and that Terminal Services is properly configured. Specifically:

- **Terminal Server Licensing.** The system must be licensed by Microsoft to operate as a terminal server. These instructions assume that you have either licensed your software,

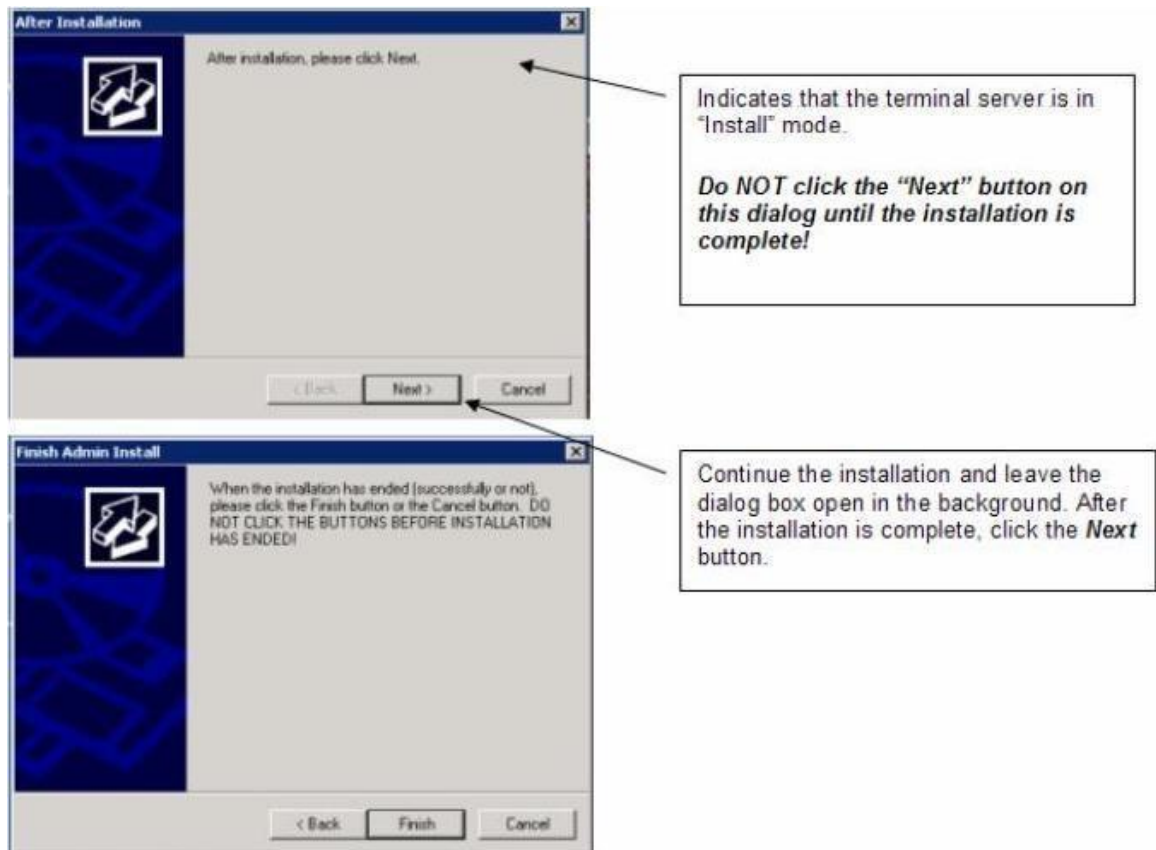
or you are in the appropriate demo period. Microsoft licensing is beyond the scope of this document. *Contact your Network or IT Manager regarding this license.*

- **Remote Desktop Users Group.** All users must be members of this group to be able to log on to the terminal server. *Contact your Network/IT Manager regarding this configuration.*
- **Creating a Sybase Service for the Database Server.** This is a Windows component that starts the database server. *See also Appendix, Sybase Database Service for instructions.*

***Please contact your Datacolor applications support person for information on installing on a terminal server.***

## Terminal Server Install Mode

When you install an application on a terminal server, the server must be in *Install* mode. This makes the installed application available to all terminal server clients. The terminal server should automatically switch to *Install* mode. You will know that you are in *Install* mode by the presence of the *After Installation* dialog box as shown below:



### NOTE

The server must be in *Install* mode for the installation of the Sybase software, and for the installation of each Datacolor SPECTRUM application program.

### ***Manually Setting Install Mode***

To change to install mode or to see what mode you are in, use the following commands. At a command prompt run the following command:

**change user /query**

This will return which mode is enabled.

To switch to install mode, run the following command:

**change user /install**

To switch to execute mode, run the following command:

**change user /execute**

Note: You should be in install mode for any program installation. After installing programs, you should switch to execute mode.

---

## **B. Create the Sybase Database Service**

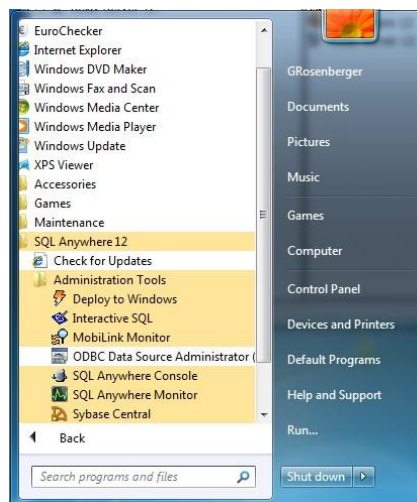
If you are installing Datacolor software on a LAN or terminal server, you must create a database service. The service starts the database server and provides access to the database for the client computers.

### **NOTES:**

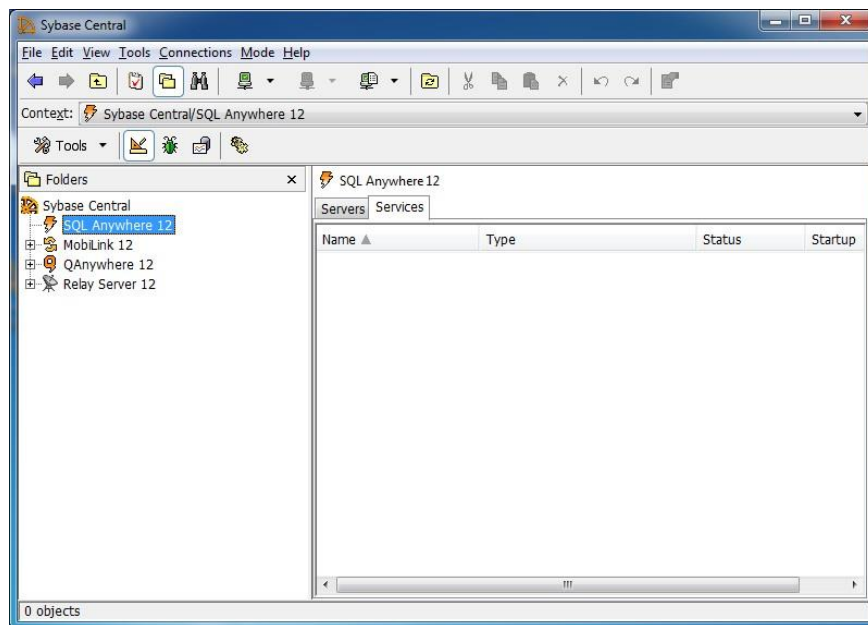
Each Datacolor program uses slightly different parameters for the database service. The parameters for Datacolor MATCHTEXTILE, Datacolor MATCHPIGMENT, and standalone Datacolor TOOLS are covered in detail at step #6 in this procedure.

### **Creating a New Service**

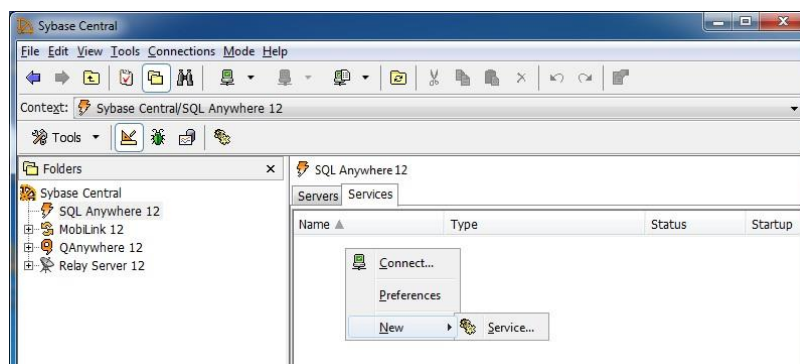
1. From the Start menu, select Programs, Sybase SQL Anywhere 12, Administration Tools Sybase Central:



The window below is displayed:



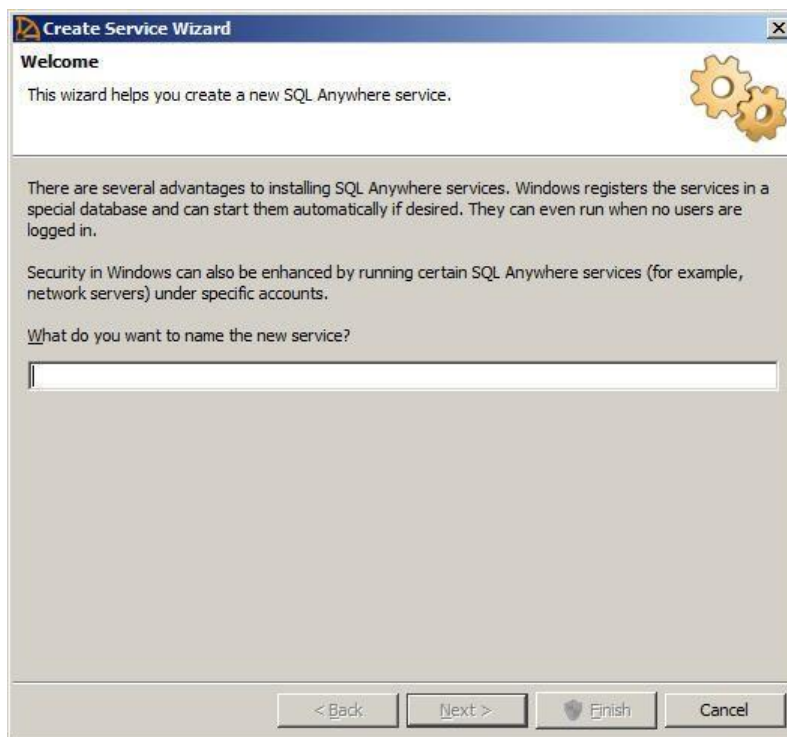
- Click on the Services tab.
- In the right pane, **right-click** anywhere. A menu will display:



2. Select New, then Service.

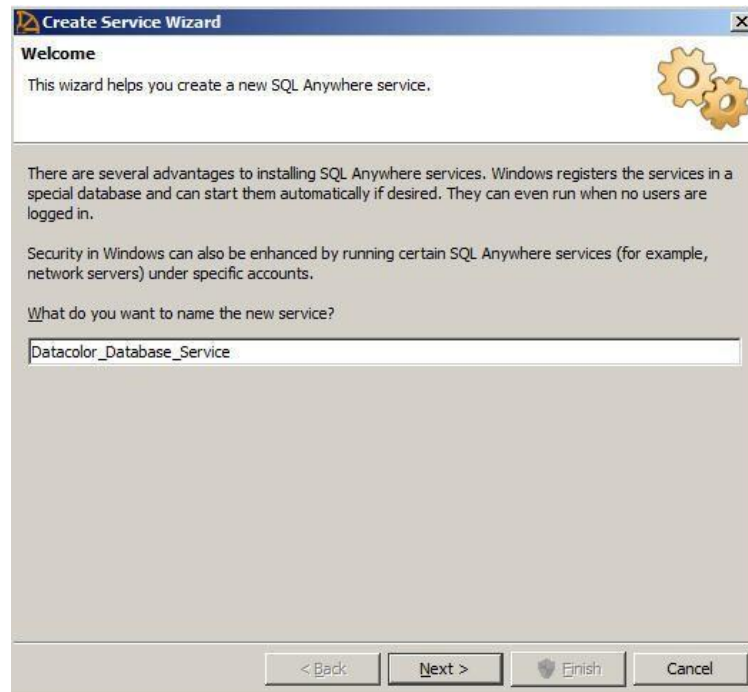
A wizard opens:





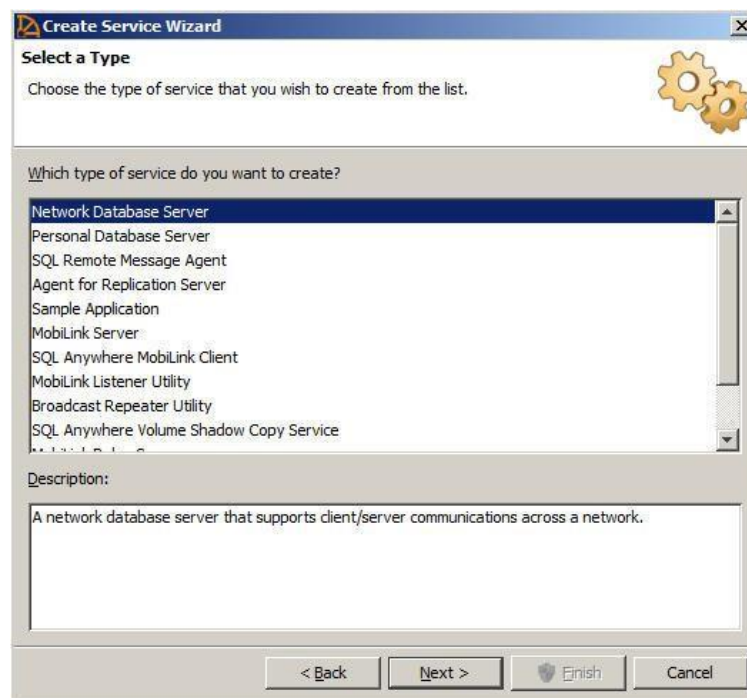
3. Enter a name for the service.

In this example, the name **Datacolor\_Database\_Service** is assigned. However, you can assign any name. It should be a name that identifies it as a Datacolor applications database.

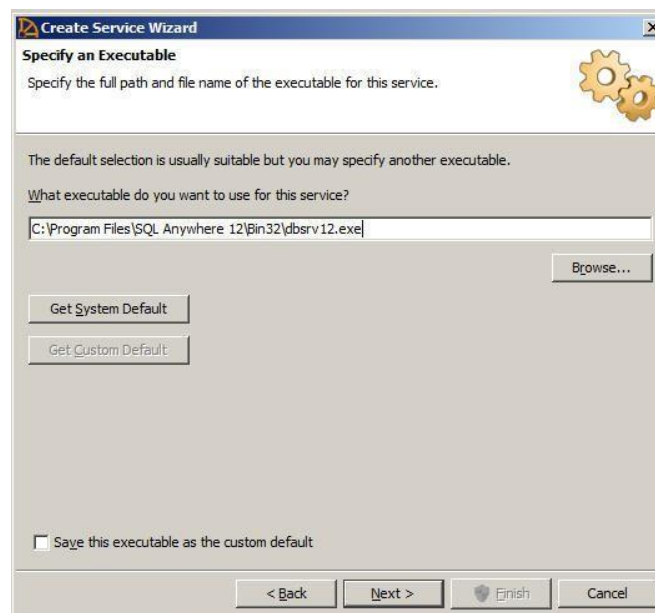


4. Click **Next**.

The program will prompt you for information regarding the service type:



- *Service Type.* Highlight **Network Database Server**.
  - *Description.* Enter a description of the service. This is optional.
5. When you have made the selections, click **Next**.  
The program will prompt you for the name of the program used to run this service:

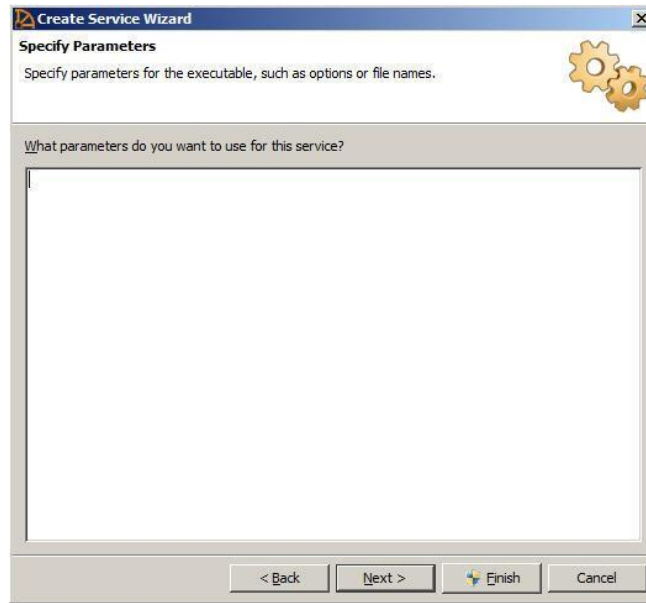


The entry should be:  
**[Drive]:\Program Files\Sybase\SQL Anywhere 12\bin32\dbsrv12.exe**

This is the default location of the network database server.

6. Verify this entry, and click **Next**.

The program will prompt you for the service parameters:



The service parameters required depend on the Datacolor SPECTRUM software you are running. Below are examples for Datacolor MATCH<sup>TEXTILE</sup> and Datacolor MATCH<sup>PIGMENT</sup>.

NOTE: For the examples below, the following information is used:

**Service Name** = Datacolor\_Database\_Service

**Database Location** = C:\ProgramData\Datacolor\Database\Database\_Global

***Datacolor MATCH TEXTILE Parameters***

-c 512m

-ti 0

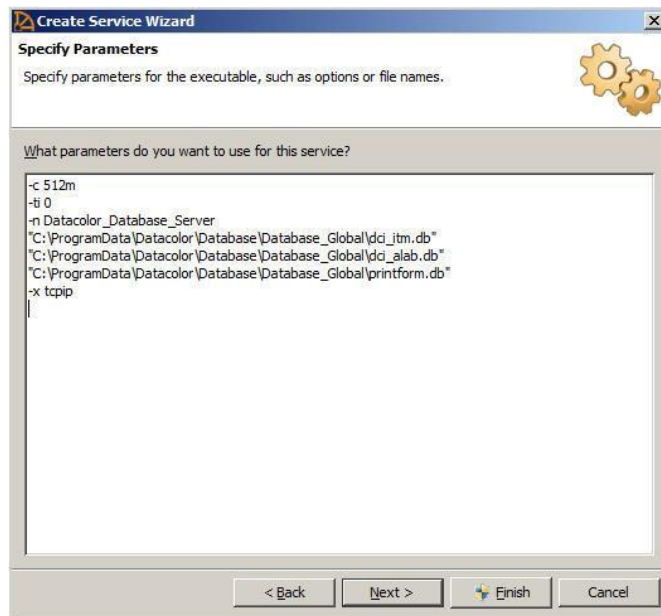
-n Datacolor\_Database\_Server

"C:\ProgramData\Datacolor\Database\Database\_Global\dcj\_itm.db"

"C:\ProgramData\Datacolor\Database\Database\_Global\dcj\_alab.db"

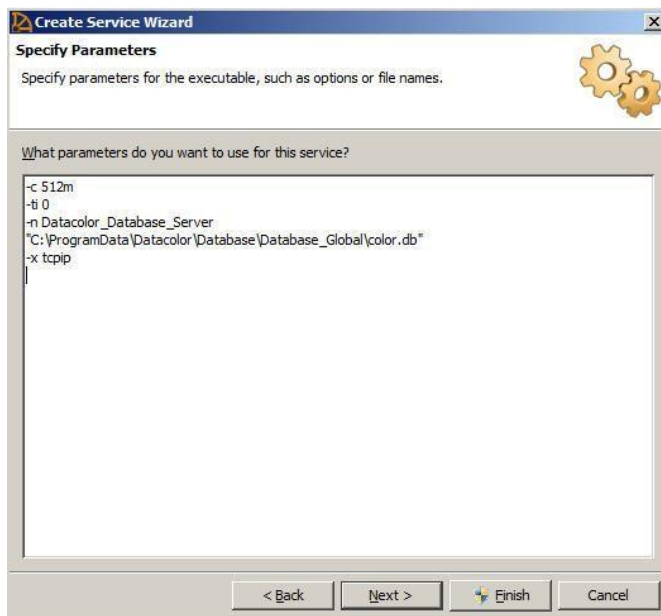
"C:\ProgramData\Datacolor\Database\Database\_Global\printform.db"

-x tcpip



### ***Datacolor Match PIGMENT Parameters***

```
-c 512m
-ti 0
-n Datacolor_Database_Server
"C:\ProgramData\Datacolor\Database\Database_Global\Color.db"
-x tcpip
```

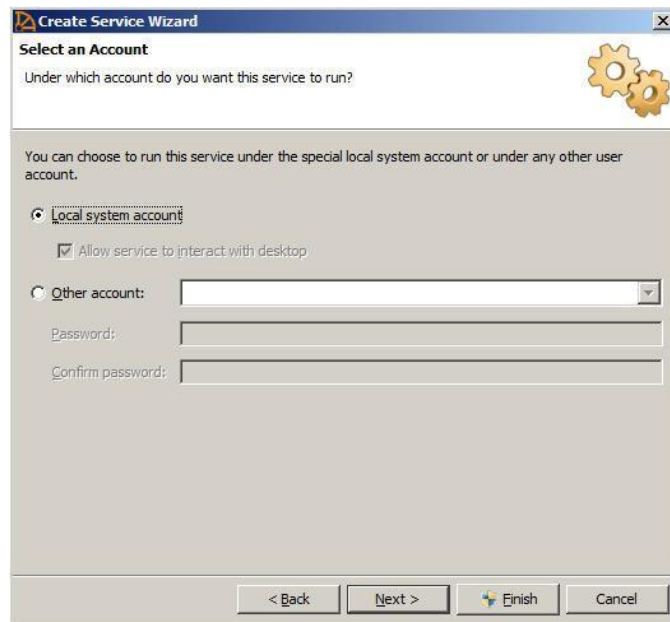


#### **NOTE**

See also **Appendix, Sybase Database Service** for a detailed explanation of the parameter entries.

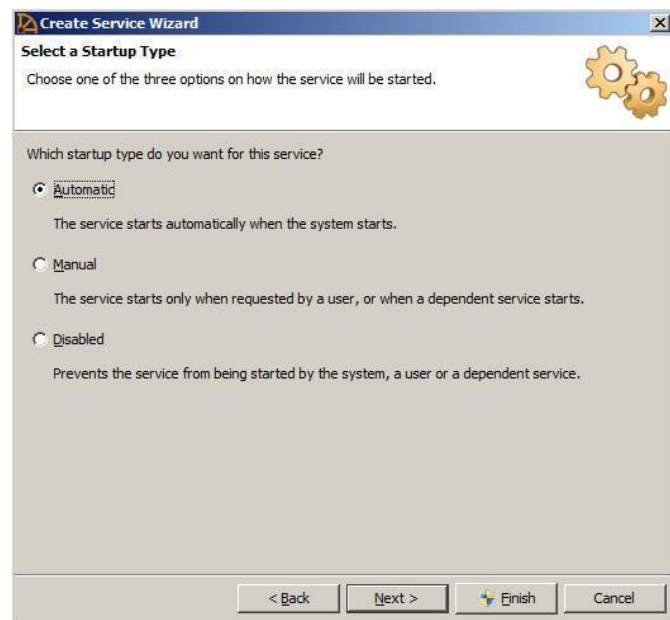
7. Click Next.

The window below is displayed:

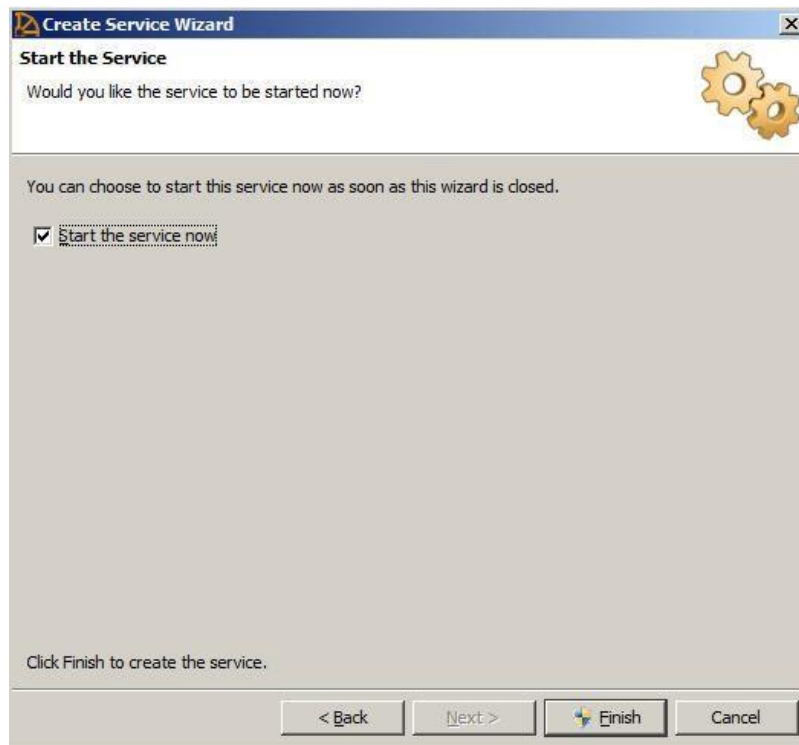


- ☐ Select **Local System Account**.
- ☐ Place a check in the box **Allow service to interact with desktop**.

8. When completed, click **Next**.  
You will be prompted for the *startup type*:



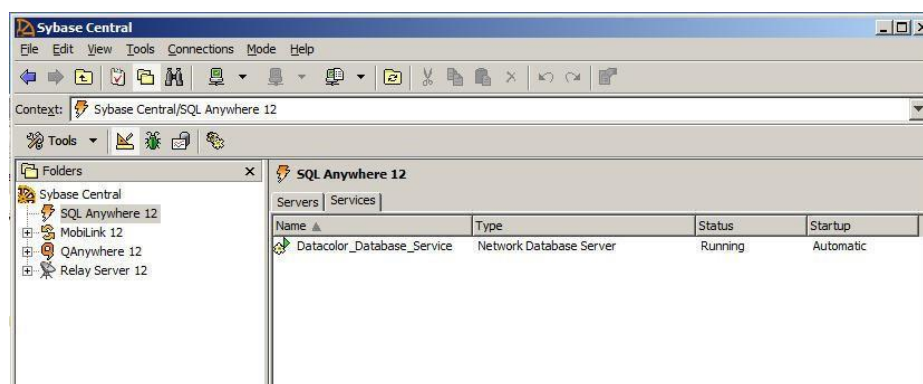
9. Select Automatic, and click **Next**.  
The window below is displayed:



- ☐ Check the box for **Start the service now**.
- ☐

10. Click on **Finish** to create the service.

The wizard closes and the *Sybase Central* window is displayed.



- ☐ In the left pane, select **SQL Anywhere 12**. The new service should be displayed under the *Services* tab in the right pane. The service icon should have a green light, which indicates that it has started.

11. Close Sybase Central.

## Database Parameters

The table below provides a detailed explanation of the parameters instructions that are defined for a Sybase database service:

Switch	Description
<b>-c size</b>	<p>Set initial cache size.</p> <p>The amount of memory available for use as a database server cache is one of the key factors controlling performance. You can set the initial amount of cache memory using the -c command-line option</p> <p>The more cache memory that can be given the server, the better will be its performance. The units K and M can be either lower case or upper case. If K or M is not supplied, any integer less than 10000 is assumed to be in kilobytes, and any integer 10000 or greater is assumed to be in bytes. For example, -c 4096 means 4096KB or 4 194 304 bytes. Whereas, -c 200 000 means (an unreasonably small) cache of 200 000 bytes.</p>
<b>-n name</b>	Use name as the name of the database server.
<b>-x list</b>	Comma-separated list of communication links to try.
<b>-ti minutes</b>	<p>Client idle time before shutdown—default 240 minutes [network server].</p> <p>Disconnect connections that have not submitted a request for minutes. The default is 240 (4 hours). A client machine in the middle of a database transaction holds locks until the transaction is ended or the connection is terminated. The -ti option is provided to disconnect inactive connections, freeing their locks.</p> <p>The -ti option does not disconnect clients that use the shared memory communications link.</p> <p>Setting the value to zero disables checking of inactive connections, so that no connections are disconnected.</p>
<b>-tl seconds</b>	<p>Default liveness timeout for clients in seconds—default 120 seconds.</p> <p>A liveness packet is sent periodically across a client/server TCP/IP or SPX communications protocol to confirm that a connection is intact. If the server runs for a liveness timeout period (default 2 minutes) without detecting a liveness packet, the communication is severed. The server drops any connections associated with that client. UNIX non-threaded clients and TDS connections do not do liveness checking.</p> <p>The -tl switch on the server sets the liveness timeout for all clients that do not specify a liveness period.</p> <p>Liveness packets are sent at an interval of the (liveness timeout)/4.</p>

## C. Updating the ODBC DSN

### Overview

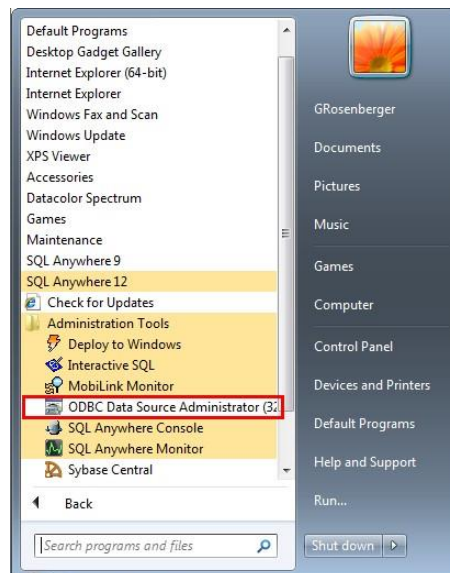
The ODBC DSN connection identifies the name and location of the database to be used. Each Datacolor product may use a different connection. If you are running under a LAN or terminal server configuration, you will need to edit the connection information to use the correct server data. Below is a table of the Datacolor programs and the DSN name associated with each:

Datacolor Program	DSN Name
Datacolor MATCH PIGMENT & Datacolor TOOLS	CC2000_DB
Datacolor MATCH TEXTILE & Datacolor TOOLS	dci_itm dci_alab printform
Datacolor TOOLS Standalone	
For stand-alone Datacolor TOOLS, the DSN name used is based on the setup type selected during program installation.	
Textile Setup	dci_itm
Pigment Setup	CC2000_DB

### Procedure to Update the ODBC DSN for LAN or Terminal Server

You must use the ODBC Administrator Program to edit an ODBC connection.

1. Click Start Menu, All Programs, Sybase SQL Anywhere 12, Administration Tools, ODBC Data Source Administrator (32-bit):

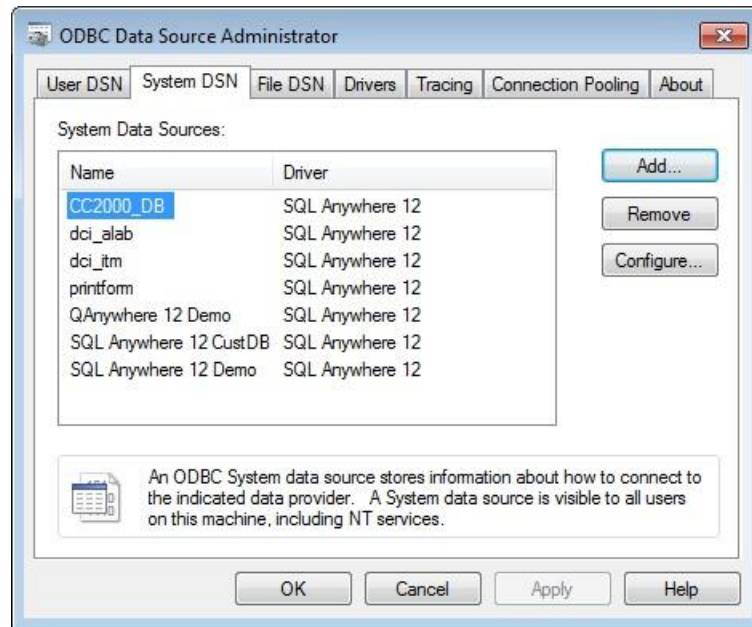


The ODBC Data Source Administrator opens.

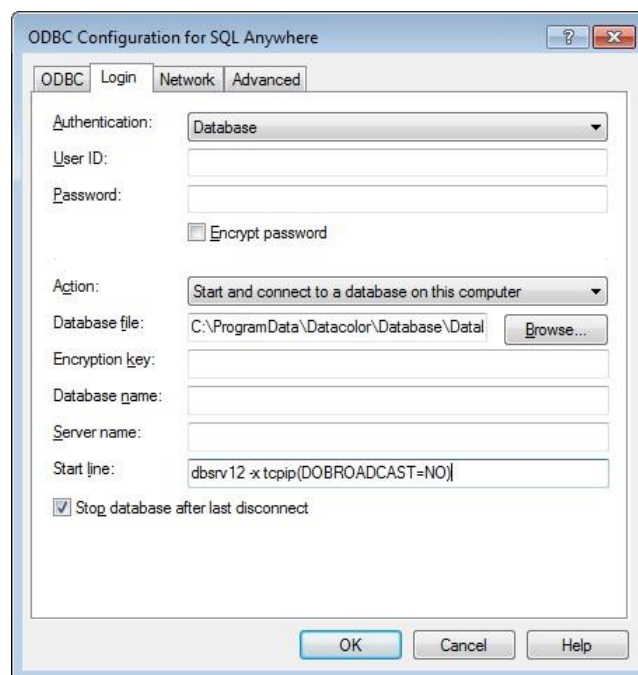


2. Click on the **System DSN** tab.

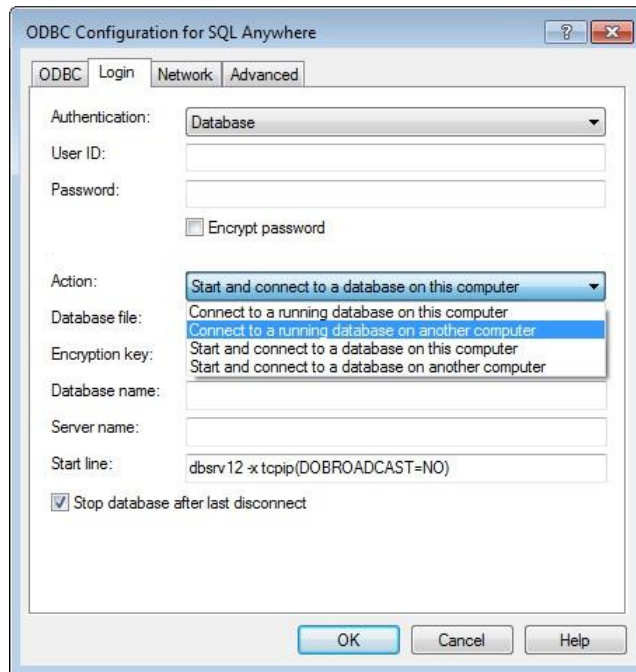
The window below is displayed. This example is using the pigment DSN: CC2000\_DB. The procedure is the same for all other DSNs.



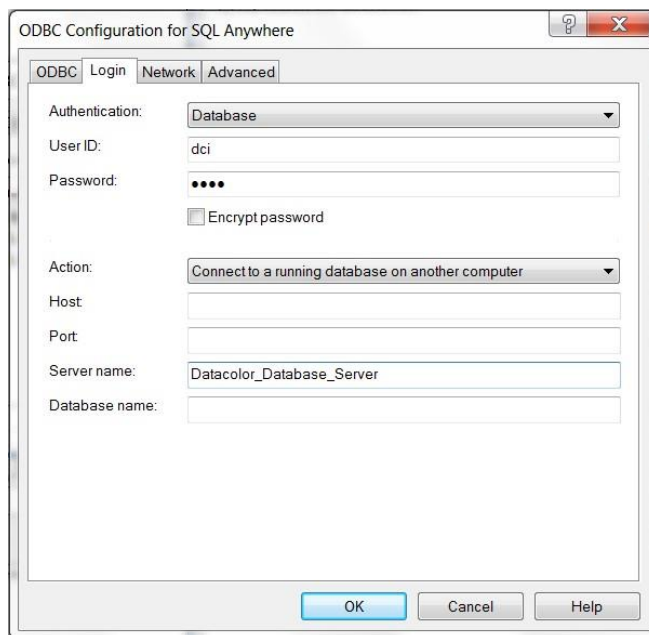
3. Highlight the database connection to be configured and click on the **Configure** button.
4. The ODBC configuration window below opens. Click on the **Login** tab.



5. Open the **Action** drop-down list box:

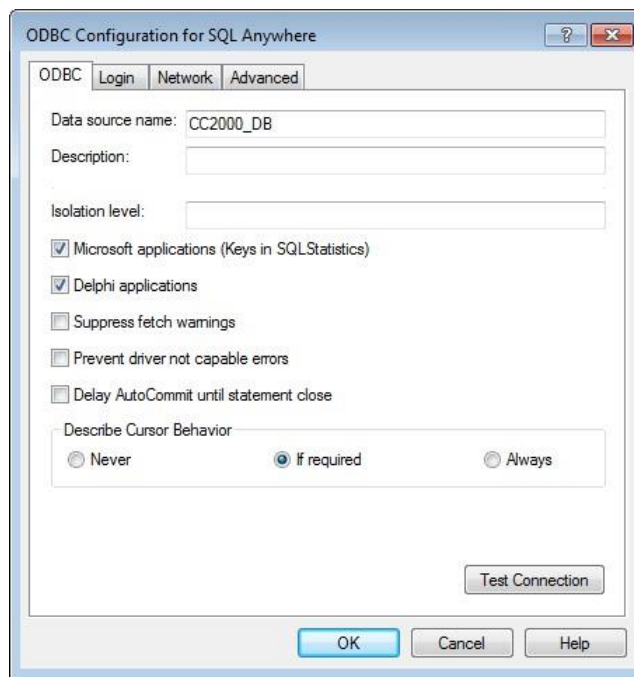


Select '**Connect to a running database on another computer**':



Type in the Sybase server name that was defined when setting up the database service. In this example, the server name is "Datacolor\_Database\_Server".

6. Click on the **ODBC** tab. The window below is displayed:



7. Click **Test Connection** to verify that the ODBC connection can connect. If it doesn't connect, recheck the ODBC connection and verify the service is running.

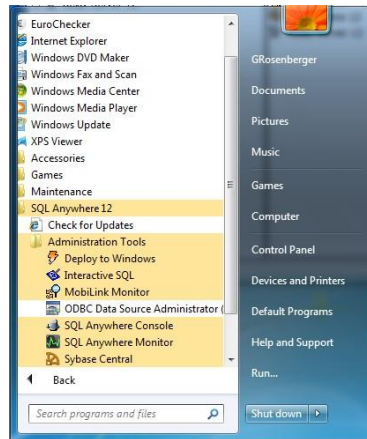
## D. Update the Sybase Database Service

The database service must be updated after an upgrade from Sybase V7 or Sybase V9 to Sybase V12. The original service started the old database engine and it must be updated to start the Sybase V12 database server.

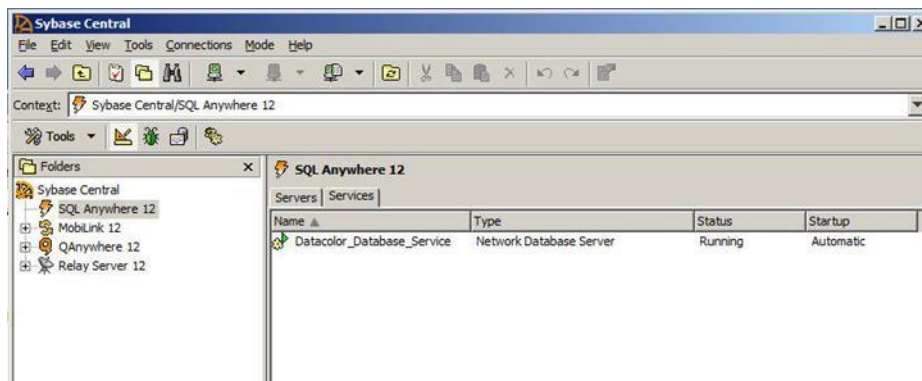
**You can update the database service only if you have upgraded all your databases with to Sybase V12.**

To edit the service:

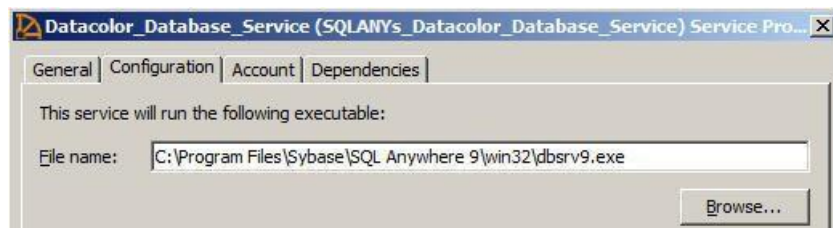
1. Click Start Menu, All Programs, Sybase SQL Anywhere 12, Administration Tools Sybase Central:



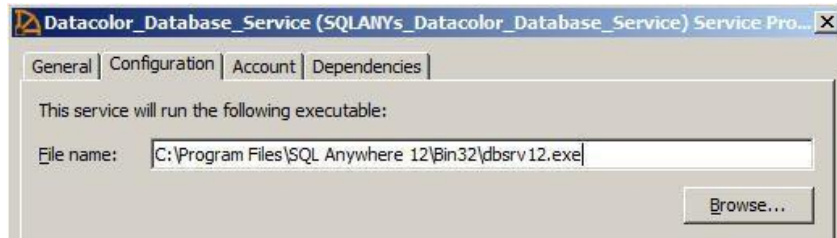
The window below is displayed:



2. Right-click on the service and select "Stop" to stop the service.
3. From the same menu, click **Properties**, and then click on the **Configuration** tab.
4. In the *File name* field, the executable currently identified is *{Path}\dbsrv9.exe* (Sybase 9):



5. Edit the executable name to **{Path}\dbsrv12.exe** (Sybase 12). Below is an example:



**Edit the Path and File Name** and *close the window*.

6. Check the Configuration Parameters

Remove the configuration parameter **-ct-** if it exists.

```
-c 512m
-ti 0
-ct-
-n Datacolor_Database_Server
"C:\ProgramData\Datacolor\Database\Database_Global\dc_i_tm.db"
"C:\ProgramData\Datacolor\Database\Database_Global\dc_i_alab.db"
"C:\ProgramData\Datacolor\Database\Database_Global\printform.db"
-x tcpip
```

For the textile database the parameters should be:

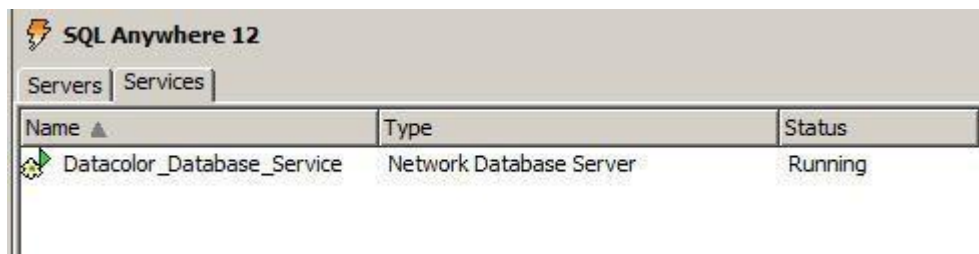
```
-c 512m
-ti 0
-n Datacolor_Database_Server
"C:\ProgramData\Datacolor\Database\Database_Global\dc_i_tm.db"
"C:\ProgramData\Datacolor\Database\Database_Global\dc_i_alab.db"
"C:\ProgramData\Datacolor\Database\Database_Global\printform.db"
-x tcpip
```

For the pigment database the parameters should be:

```
-c 512m
-ti 0
-n Datacolor_Database_Server
"C:\ProgramData\Datacolor\Database\Database_Global\color.db"
-x tcpip
```

**Note:** The **"-c"** parameter determines the amount of memory available for the database server. The current value may be different in your service. You can keep the current value.

7. Right click on the database service and select **"Start"** to start the service. The service should now be on as shown below:



---

## E. Unload and Reload Database

The size of a database does not shrink if you delete data. Empty sections are simply marked as free so they can be used again. They are not removed from the database unless you rebuild it. Rebuilding a database can reclaim disk space if you have deleted a large amount of data. Rebuilding databases can also improve database performance. The process of rebuilding is accomplished by unloading the data from the database, creating a new database and then reloading the data back into the new database.

### Rebuild Database on Standalone Systems

The database rebuild process for a system without a database service is described below.

With a standalone system, the database can be rebuilt from the Sybase V12 installation USB. Select **Install Sybase 12**. Select the option “Upgrade/Rebuild Database” from the menu:



The rebuild can also be done from the Utilities Menu in the Datacolor Application Program’s Menu.

Select the option “Rebuild Database” from the Datacolor Utilities Menu.

## Rebuild Database on Networked Systems

On networked systems using a Sybase database service, the rebuild cannot be done with the database service running. The database service must be stopped and the rebuild can be done manually using Datacolor batch files.

The actual procedure used will depend on the specific system configuration. The main criteria will be whether there is a dedicated database server and whether the Datacolor ODBC DSN can be used to locate the database.

If a dedicated server is used, there isn't a DSN defined on the server. In this case, we can either define a DSN temporarily or specify the database location directly in a batch file.

In cases where there is a DSN defined, the DSN cannot refer to a server as defined in a service. If the DSN references a server name, the DSN can be temporarily modified or we can specify the database location directly in a batch file.

### Case 1: Dedicated Server Used

There isn't a DSN defined on the server. The service will be stopped and the database location will be specified in a batch file.

### Case 2: Non-dedicated Server Used

The DSN exists but it refers to the server name defined by the service. The service will be stopped and the database location will be specified in a batch file.

Both cases will use the following procedure:

### Procedure for Using Datacolor Batch Files to Unload/Reload a Networked Sybase V12 Database

1. Stop the Sybase Database Service
2. Copy the batch file "SybaseDBRebuild.bat" to the Desktop (or a specific folder).
3. For a textile system, copy the batch files "dci\_itmDBRebuild.bat", "dci\_alabDBRebuild.bat" and "printformDBRebuild.bat" to the Desktop (or a specific folder).

For a pigment system, copy the batch file "colorDBRebuild.bat" to the Desktop (or a specific folder).

4. Copy the folder "sed" from the Sybase DVD root folder to the Desktop or the same folder/location where above batch files are copied.

5. Edit the application batch files with the parameters that you want to use.

- a) To unload and reload an existing Sybase V12 database on a Sybase V12 system, you can use the DSN.

For Example: To use the DSN in "colorDBRebuild.bat" edit the last line as follows:

```
call SybaseDBRebuild "cc2000_db" "" "" "dci" "kwak"
```

- b) To convert a Sybase V9 database on a Sybase V12 system, you must use the database location because the DSN will only connect to a V12 database.

For Example: To use the database location for a database located in folder "C:\convert" in "colorDBRebuild.bat" edit the last line as follows:

```
call SybaseDBRebuild "" "C:\convert\color.db" "C:\convert\color.log" "dci" "kwak"
```

For a textile database, edit the batch files "dci\_itmDBRebuild.bat", "dci\_alabDBRebuild.bat" and "printformDBRebuild.bat".

#### 6. Run the batch files.

For a textile system, run the batch files "dci\_itmDBRebuild.bat", "dci\_alabDBRebuild.bat" and "printformDBRebuild.bat".

For a pigment system, run the batch file "colorDBRebuild.bat".

## Technical Information - Datacolor Rebuild Batch Files

Datacolor uses a batch file "SybaseDBRebuild.bat" to automate the unload and reload process.

There are a number of additional batch files that are used with "SybaseDBRebuild.bat" to perform a rebuild.

- For textile systems, these are dci\_itmDBRebuild.bat, dci\_alabDBRebuild.bat and printformDBRebuild.bat.



- For pigment systems, this is colorDBRebuild.bat.

These additional batch files call the main batch file “SybaseDBRebuild.bat” and send specific parameters. The batch files are located in the root folder of the Sybase V12 Installation DVD.

The batch file “SybaseDBRebuild.bat” takes the following parameters:

Parameter	
1 = DSN Name	ODBC DSN Name
2 = Database File and Path	Full path and database file name
3 = Database Log File and Path	Full path and database log file name
4 = User Id	Database Admin User ID
5 = Password	Database Admin Password
6 = Sybase Service Name	Service Name
7 = Database Collation	Collation

The batch file will unload the existing database, create a new empty database and then reload the data into the new database. The new database will be named the same as the original database. The original database will be renamed with the string “\_old” appended to the file type.

Shown below are some examples of how to use the batch file:

#### **Run “SybaseDBRebuild.bat” Without Any Parameters**

Example at a DOS prompt run: SybaseDBRebuild

The system will prompt you to select a DSN. All DSNs will be enumerated. After you select a DSN, you will be prompted for a User and Password.

#### **Run “SybaseDBRebuild.bat” With a DSN, UserID, and Password**

Example at a DOS prompt run: SybaseDBRebuild “CC2000\_DB” “” “” “dci” “kwak”

The DSN will be used to find the database and log files. This cannot be used if the DSN points to a server running from a database service. This also cannot be used to convert a Sybase V9 database to Sybase V12 since the DSN will already be using Sybase V12 drivers.

#### **Run “SybaseDBRebuild.bat” With a Database File Name, Log File Name, UserID, and Password**

Example at a DOS prompt run: SybaseDBRebuild “”

“C:\ProgramData\Datacolor\Database\Database\_Global\color.db”

“C:\ProgramData\Datacolor\Database\Database\_Global\color.log” “dci” “kwak”

The database and log files are given in the batch file.

This can be used to either unload/reload a Sybase V12 database or to convert a Sybase V9 database to Sybase V12 on a Sybase V12 system.

Instead of calling the batch file "SybaseDBRebuild" directly at a command prompt, use the additional rebuild batch files described above. An example follows using "colorDBRebuild.bat" to call "SybaseDBRebuild.bat".

#### Using "colorDBRebuild.bat" to call "SybaseDBRebuild.bat"

The batch file "colorDBRebuild.bat" is shown below:

```
@echo off
if "%~1" == "?" goto :Help goto
:Start
:Help CLS
echo Please call it without any parameters echo It calls SybaseDBRebuild.bat in
order to unload and reload a color database echo. goto :eof
:Start
CLS
SETLOCAL
call SybaseDBRebuild "cc2000_db" "" "" "dci" "kwak"
```

In this example, it is using the DSN name with the user and password.

The following line is edited based on how the parameters are to be sent:

```
call SybaseDBRebuild "DSN" "{path}\database file" "{path}\database log file" "user"
"password" "Sybase Service name" "Collation"
```

Note: The service name is optional. If given, it will turn off the service. If not given, it will use the service name "DatacolorASAService".

Note: The collation name is optional. If not given, the collation will be the same as the original database.