

Datacolor MATCH^{TEXTILE}

Installation Guide

Datacolor MATCH^{TEXTILE™} Stand-Alone Installation Guide
(June, 2024)

All efforts have been made to ensure the accuracy of the information presented in this format. However, should any errors be detected, Datacolor appreciates your efforts to notify us of these oversights.

Changes are periodically made to this information and are incorporated into forthcoming versions. Datacolor reserves the right to make improvements and/or changes in the product(s) and/or program(s) described in this material at any time.

© 2024 Datacolor. Datacolor, SPECTRUM and other Datacolor product trademarks are the property of Datacolor.

Microsoft and Windows are either registered trademarks of Microsoft Corporation in the United States and/or other countries.

To obtain information on local agents, sales or support contact, visit our website at <https://www.datacolor.com/contact/business-solutions-contacts/>

Support Questions? If you need help with a Datacolor product, please contact support at: <http://industrial.datacolor.com/support>.

Committed to Excellence. Dedicated to Quality. Certified to ISO 9001 in Manufacturing Centers Worldwide.

Table of Content

- 1 INSTALLATION OVERVIEW 4**
 - 1.1 SYSTEM REQUIREMENTS..... 4
 - DATACOLOR MATCH TEXTILE INSTALLATION SET 4
 - 1.2 SYBASE INSTALLATION OPTIONS..... 5
- 2 INSTALLING DMT ON A CLEAN SYSTEM (NON-UPGRADE CASE)..... 6**
 - 2.1 STANDALONE SYSTEM..... 6
 - 2.2 LOCAL AREA NETWORK (LAN)..... 6
 - 2.2.1 *Server Installation*..... 6
 - 2.2.2 *Client Installation* 6
- 3 STEP-BY-STEP INSTALLATION OF DMT (STANDALONE SYSTEM)..... 7**
 - 3.1 SETUP TYPES 12
 - 3.1.1 *Complete*..... 12
 - 3.1.2 *Custom*:..... 12

1 Installation Overview

This document describes the installation of Datacolor Software to your computer's hard disk. If you have purchased your computer from us, the software will be already installed. If you purchased your own computer, follow these instructions to install our software on your computer.

Before you begin the installation, you should have all ISO images, and Microsoft Windows* should be properly installed on your computer. Have a valid license activation code with a maintenance date greater than the release date of the installer. For Offline and Local License Server activation and installation, please refer to their respective installation instructions.

1.1 System Requirements

Follow the link below for information on the system requirements:

<https://www.datacolor.com/business-solutions/downloads>

Please contact Datacolor for Terminal Server hardware and software requirements.

Datacolor MATCH TEXTILE Installation set

There are 3 ISO images for installing Sybase, DMT and TOOLS.

1. Sybase ISO image
2. DMT Application ISO image
3. TOOLS Application ISO image

Important, Before You Begin! *You must have Administrator Rights to install this software and you must have installed Sybase first!*

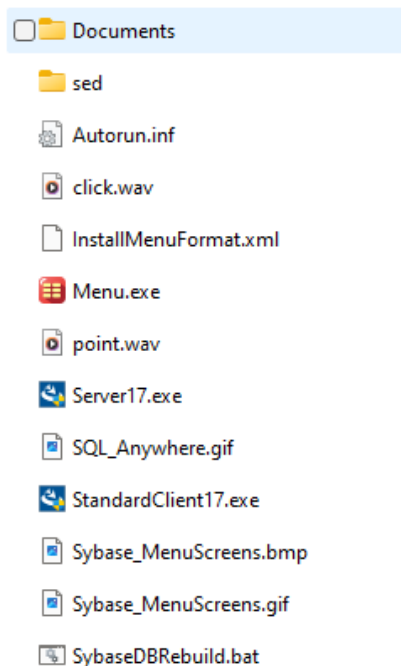
1.2 Sybase Installation Options

There are 2 different Sybase Installation options on the Sybase ISO image:

1. **Standard Client Installation** – This is a silent install that will not ask which components to install or ask about the number of licensed users. This should be used for all stand-alone PC systems as well as for client installations for PCs on a traditional LAN.
2. **Install Sybase Server** – This installation will ask which components to install and also allow you to set the number of licensed users. This should be used for the server installation on a traditional LAN and for a terminal server application.

Both of the above installations are basically the same. The only difference is the Standard Client is a silent install while the Sybase Server install asks questions. For example, the Server Install will allow you to set the number of users.

Sybase ISO Image – Directory Structure



2 Installing DMT on a Clean System (non-upgrade case)

2.1 Standalone System

This is a dedicated, single-user system that does not share the database. The Sybase database server and the Datacolor applications software is installed on the same system. To install on a standalone system, follow these steps:

1. Mount the **Sybase ISO image**, select **Standard Client Installation** from the installation menu and follow the prompts. For step-by-step instructions, see the document *SybaseInstallationGuide_REV_14.pdf*.
2. After Sybase has been installed, mount the **DMT ISO image** and select the option to install Datacolor Match Textile.
3. After DMT has been installed, mount the **TOOLS ISO image** and select the option to install Datacolor TOOLS. For step-by-step instructions, see the *Installation Instructions for TOOLS found on the installation menu of the install CD*.

2.2 Local Area Network (LAN)

This is a group of systems that share a common database. The Datacolor application software is installed on each client machine, and the database is located on a server that can be accessed by all of the client computers.

2.2.1 Server Installation

This installation procedure is performed on the server computer.

1. Mount the **Sybase ISO image**, select **Install Sybase Server** from the installation menu and follow the prompts. For step-by-step instructions see the document *SybaseInstallationGuide_REV_14.pdf*.
2. Create a **Windows database service** for the Sybase Adaptive Server program. For step-by-step instructions, see also *Appendix, Sybase Database Service in SybaseInstallationGuide_REV_14.pdf*.

2.2.2 Client Installation

This installation procedure must be repeated for each client computer on the network.

1. Mount the **Sybase ISO image**, select **Standard Client Installation** from the installation menu and follow the prompts. For step-by-step instructions, see also *Detailed Installation Instructions, Sybase Client Installation in SybaseInstallationGuide_REV_14.pdf*.
2. Install **DMT** and **TOOLS** on each client computer. For step-by-step instructions, see also the *Installation Instructions for the specific application*.
3. Modify the **ODBC connection** on each client computer. This directs the program to look for the databases on the network. For step-by-step instructions, see also *Appendix, ODBC Connection in SybaseInstallationGuide_REV_14.pdf*.

3 Step-By-Step installation of DMT (Standalone System)

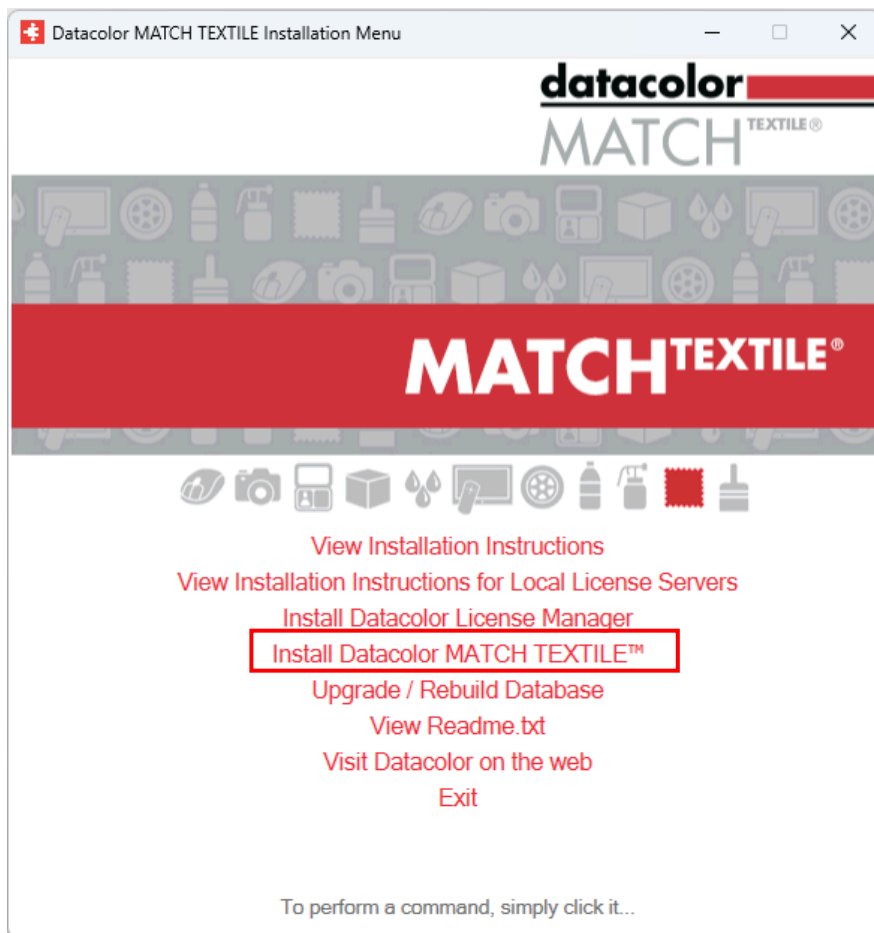
To install your application software, do the following:

1. Start Windows.
2. Mount the product ISO image and run the Menu.exe.
3. The main installation menu should appear.

If you do not see the menu window, do the following:

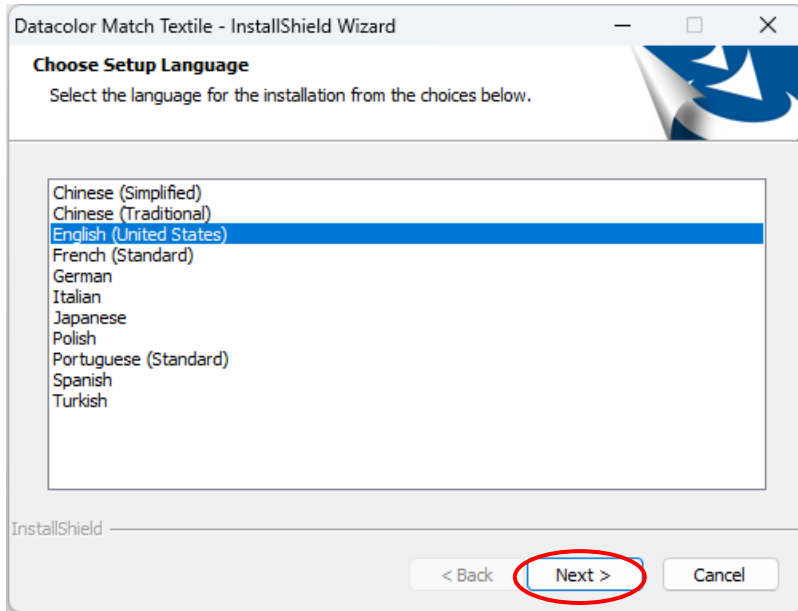
Click the **Start** button from the start menu, choose **Run...**

in the Run dialog box, type **D: MENU** and click OK. (If your ISO image Drive is a letter other than D, use that letter in the dialog box.)

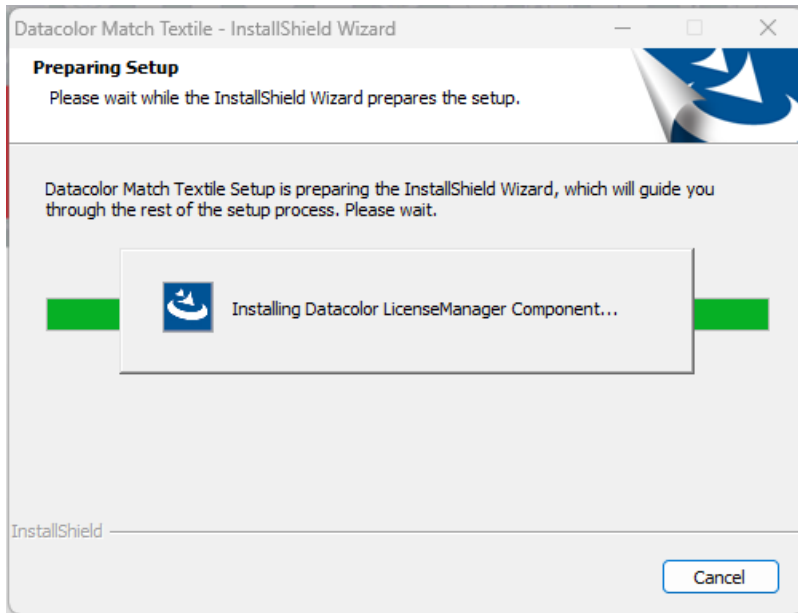


When the Main Installation Menu is displayed, choose “**Install Datacolor Match Textile**” The Datacolor MATCH TEXTILE installation will guide you through installing Datacolor MATCH TEXTILE on your computer

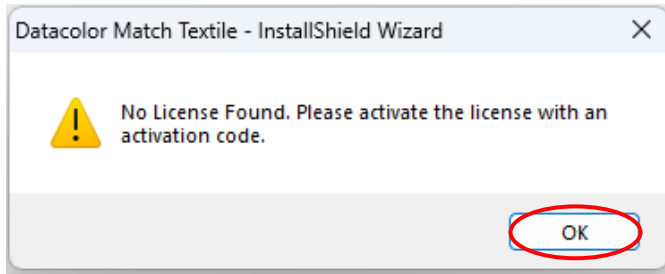
Select a language from the list box. (Language include Chinese (simplified), Chinese (traditional), English, French (standard), German, Italian, Japanese, Polish, Portuguese (standard), Spanish and Turkish.)



Click **“Next”**. The installation of DCLicenseManager will start.



The software will detect that there is no license found.

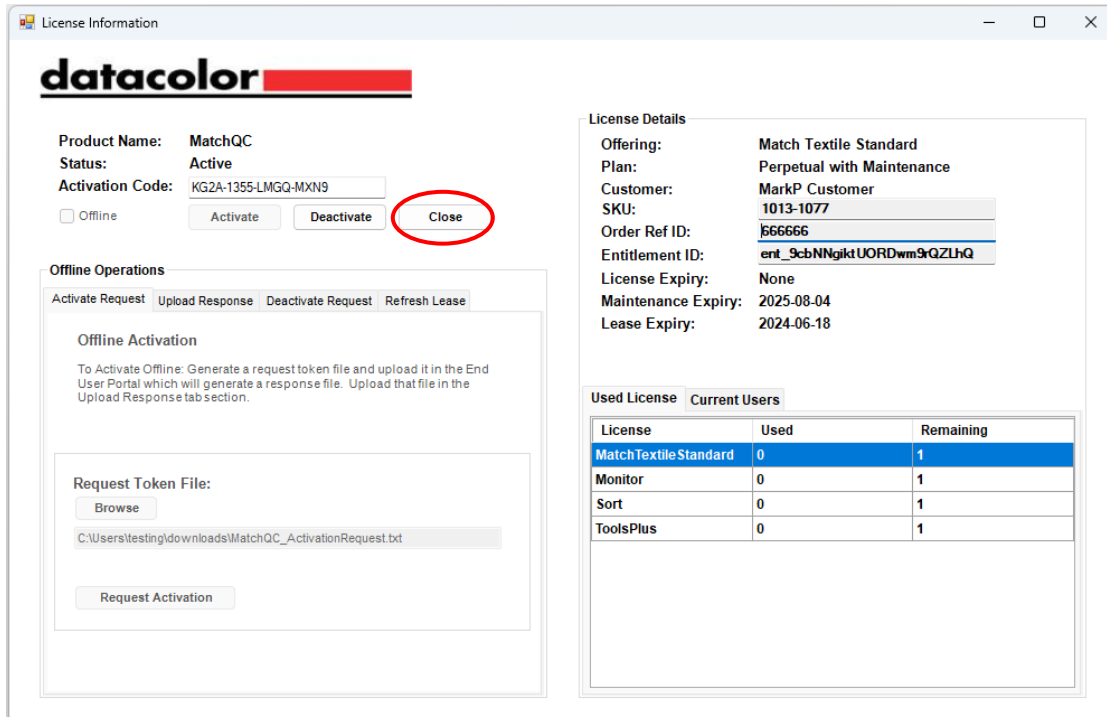


* If a previous valid license is found in your system, you will not be prompted to activate the license.

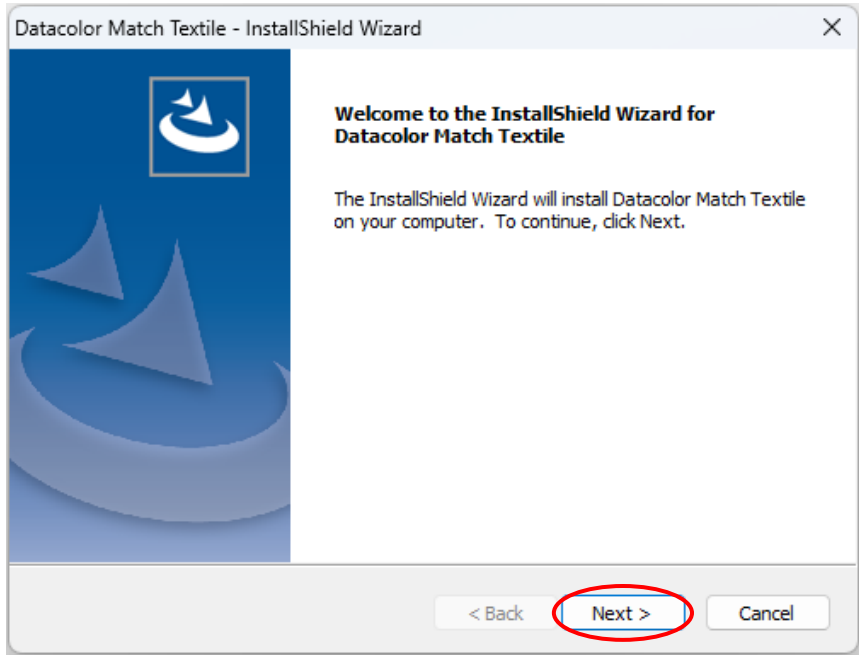
Click OK and the License Activation window is displayed.



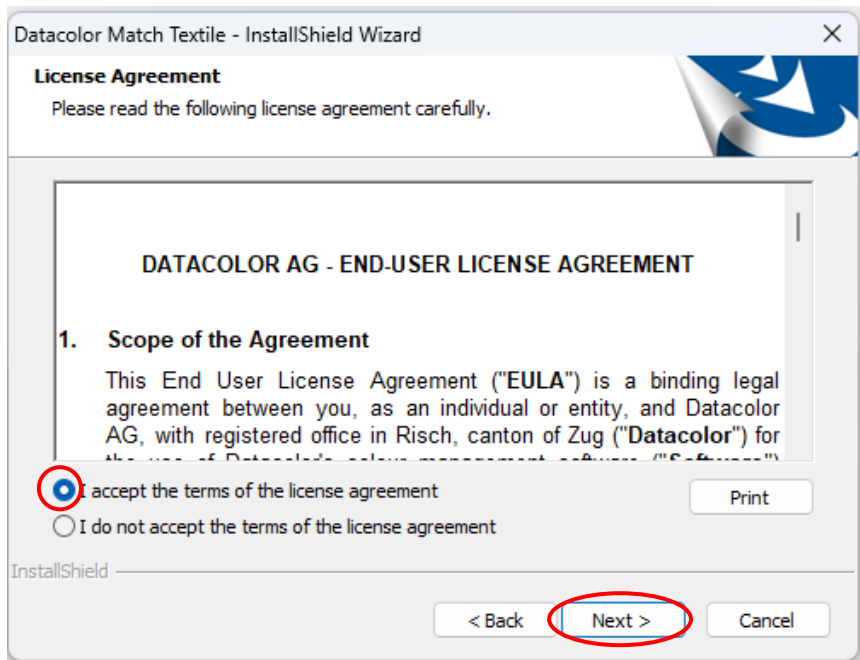
Enter an Activation Code and click "Activate".



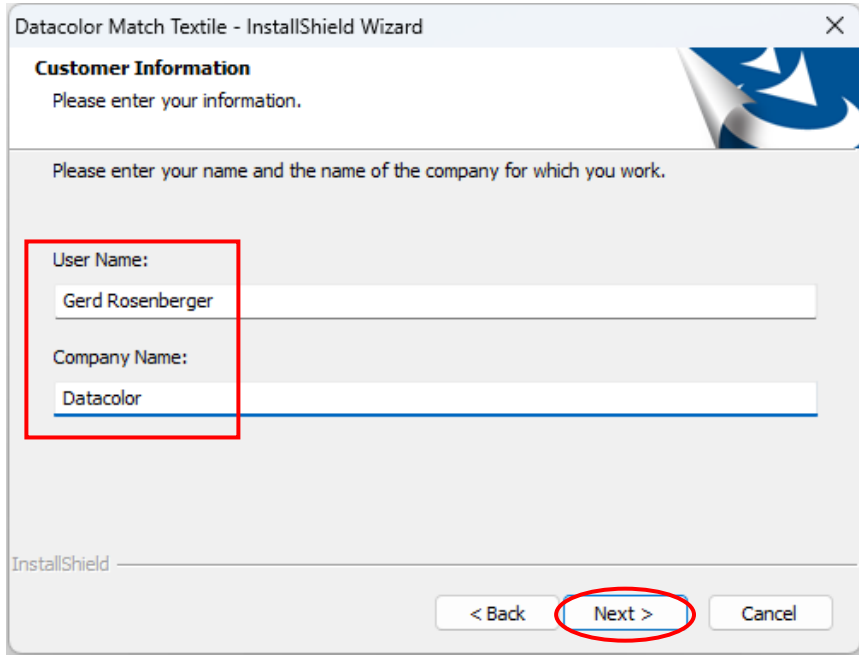
Click **Close** to continue.



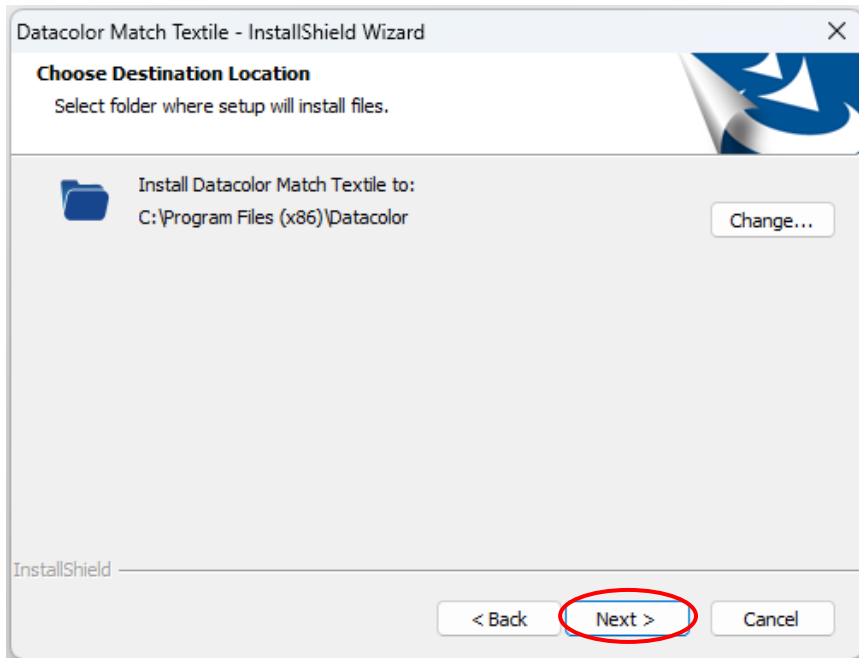
Click **“Next”** to access the Datacolor Software License Agreement dialog. You must select the acceptance radio button in order to install Datacolor MATCH TEXTILE.



Select the acceptance radio button and click the **“Next”** button to proceed.



Enter the user name and company name. Then click “**Next**”



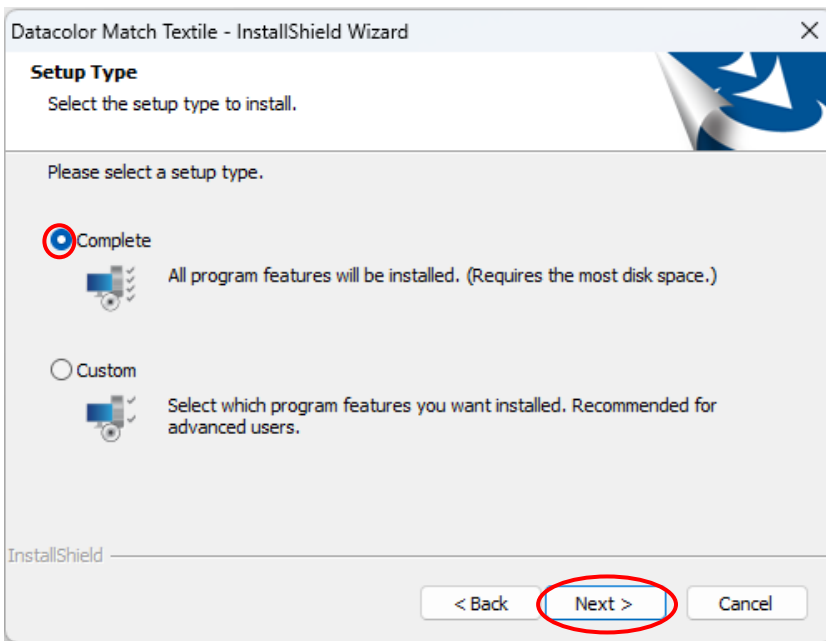
Click “**Next**” to select default installation folder. Normal default is C:\Program Files\Datacolor

3.1 Setup types

You will now see a screen offering you several different setup options.

3.1.1 Complete

(All modules are installed on your computer.)

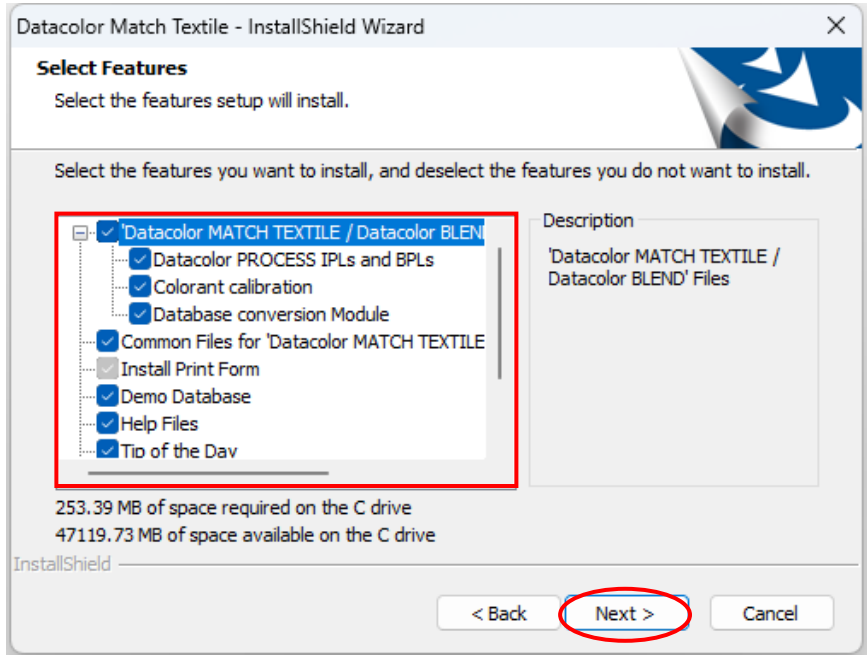


Select the Setup Type to install and click “**Next**”.

3.1.2 Custom:

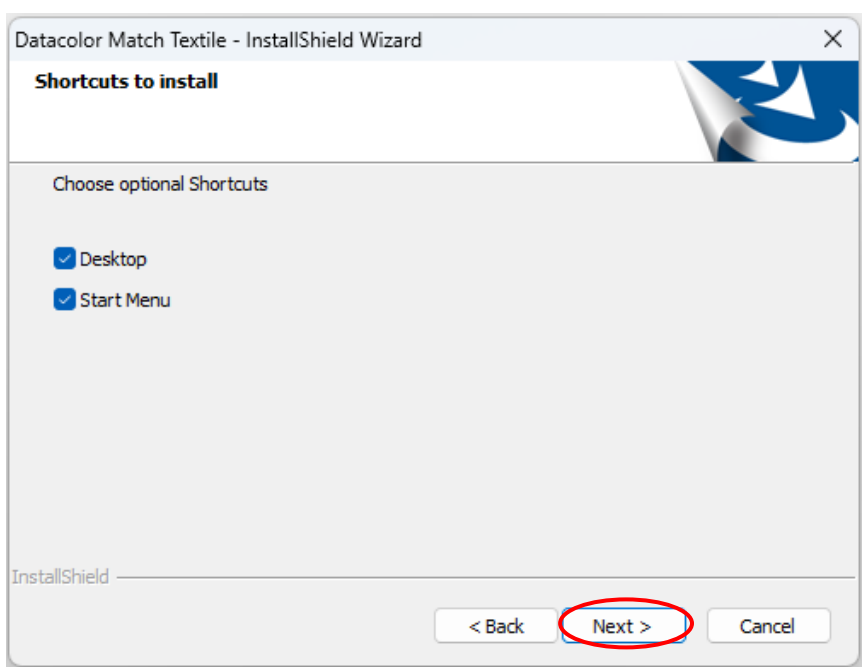
Please note, this is not recommend for typical user installations.

Custom setup allows you to install specific features instead of the entire Datacolor MATCH ^{TEXTILE} installation.

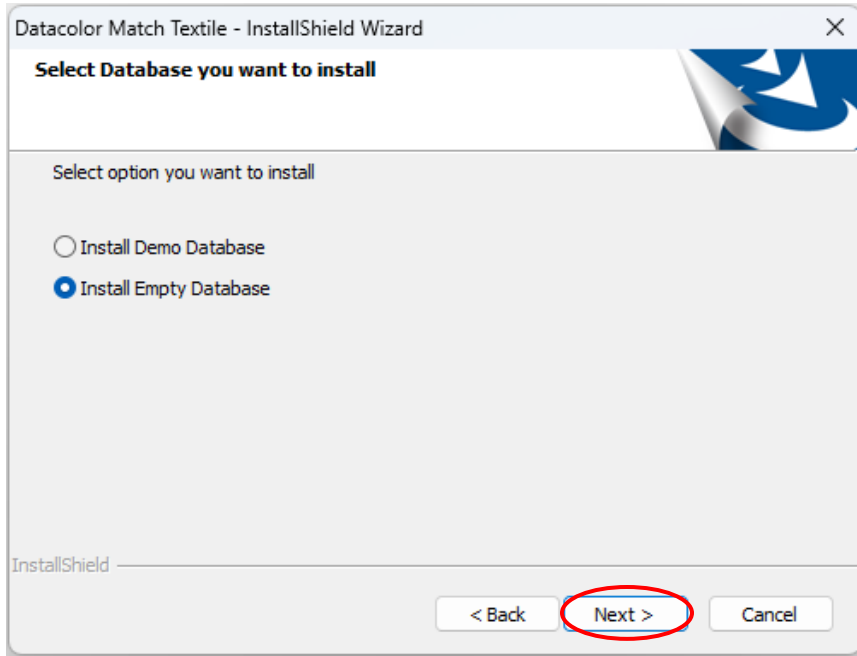


Click **“Next”** to select the shortcuts to install.

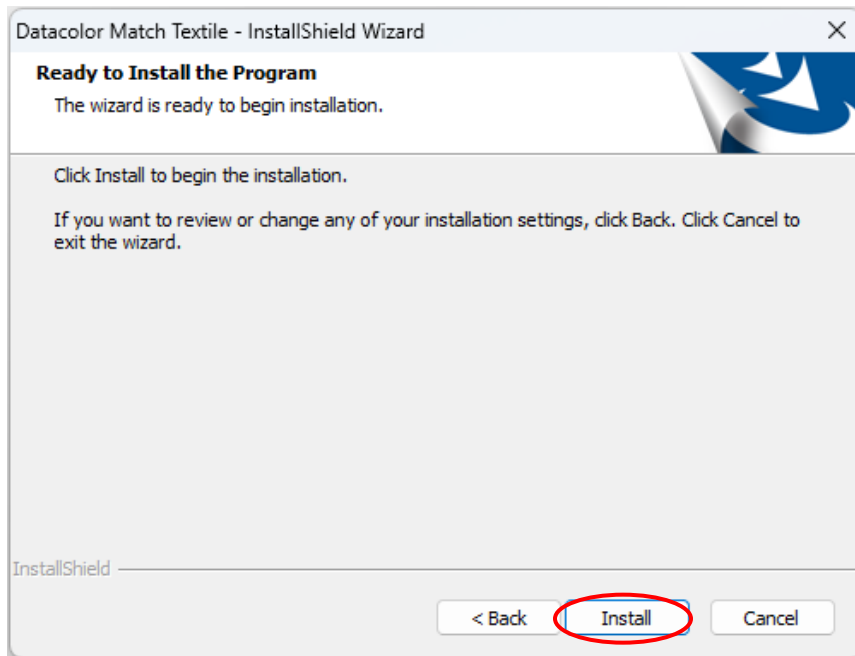
At default, the installation will put Datacolor Match icon on your desktop and a shortcut to start program menu.



Click **“Next”** to continue the installation.

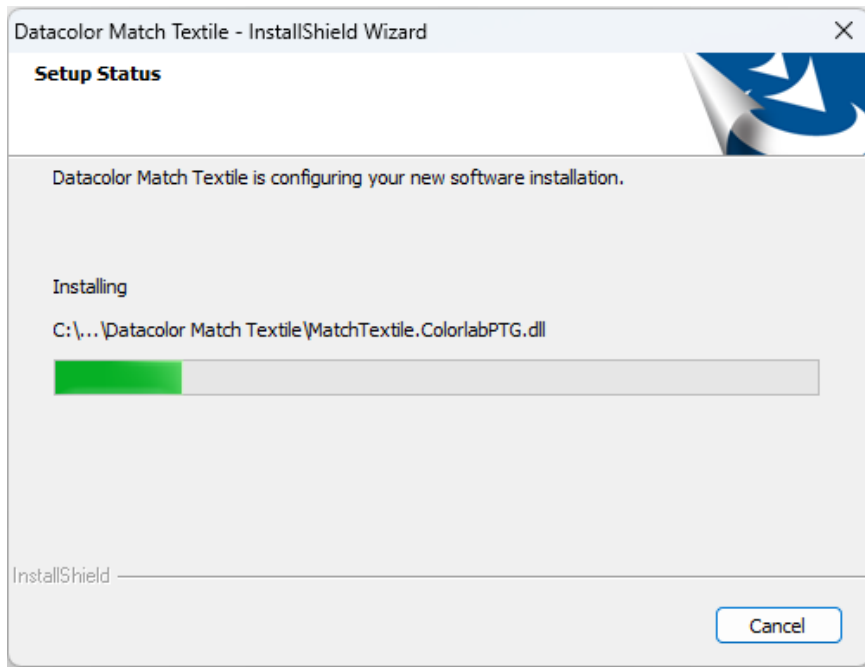


Click **“Next”**

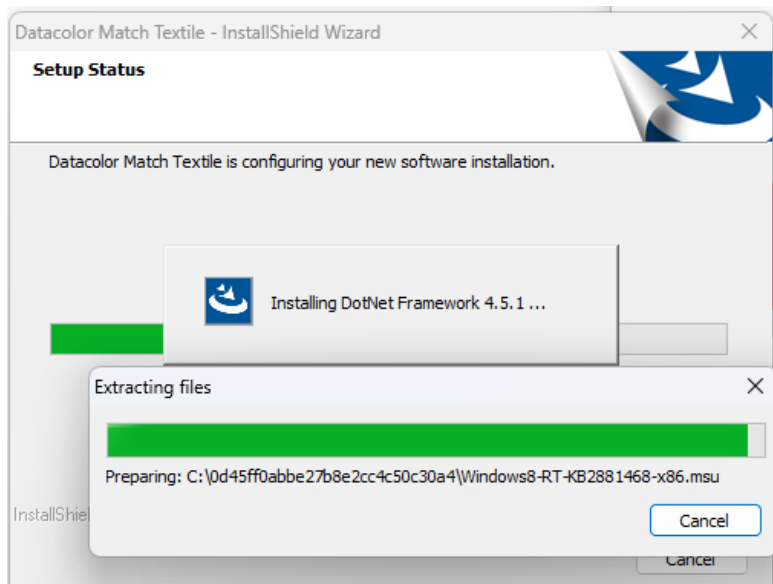


Click **“Install”** to transfer the data

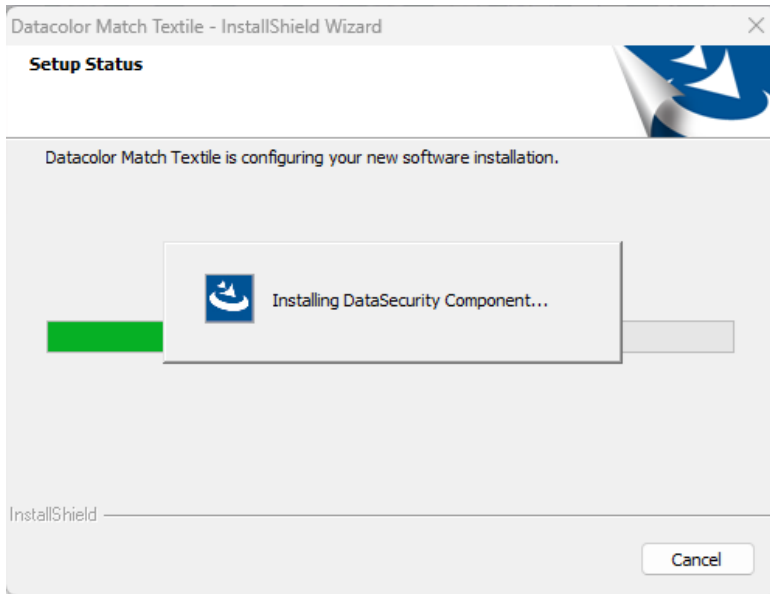
Setup starts transferring the files



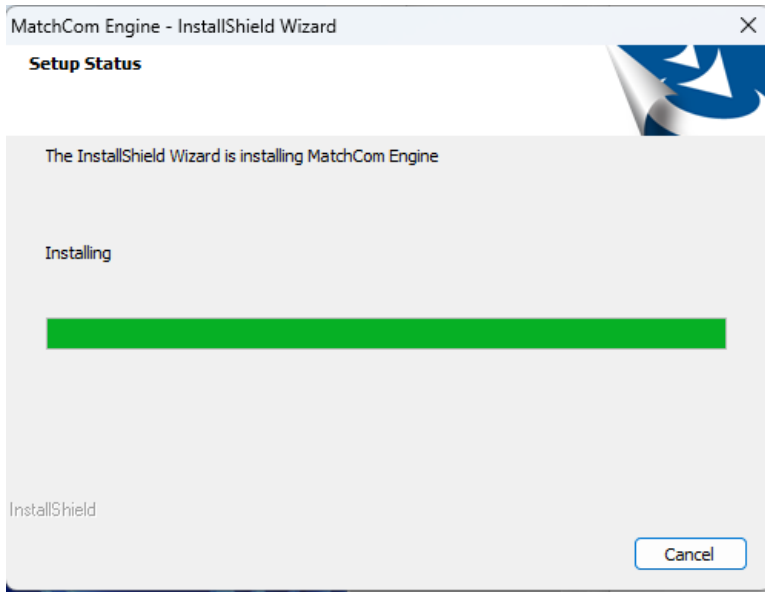
followed by installing the DotNet Framework:



followed by installing the DataSecurity:



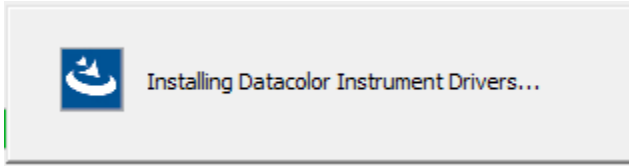
followed by installing the MatchCom Engine:



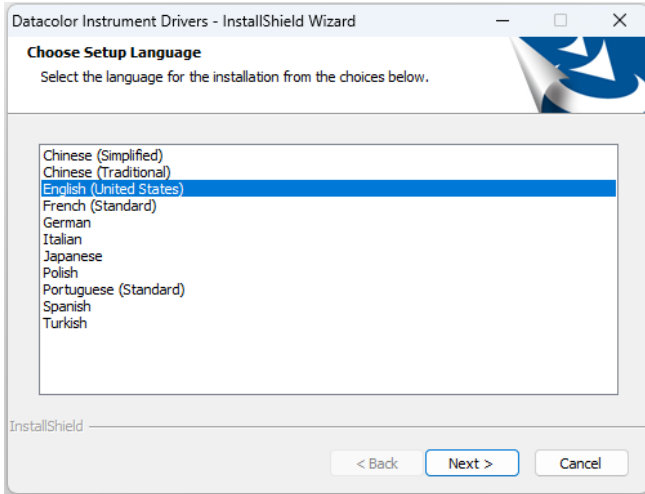
followed by installing the Datacolor Envision:



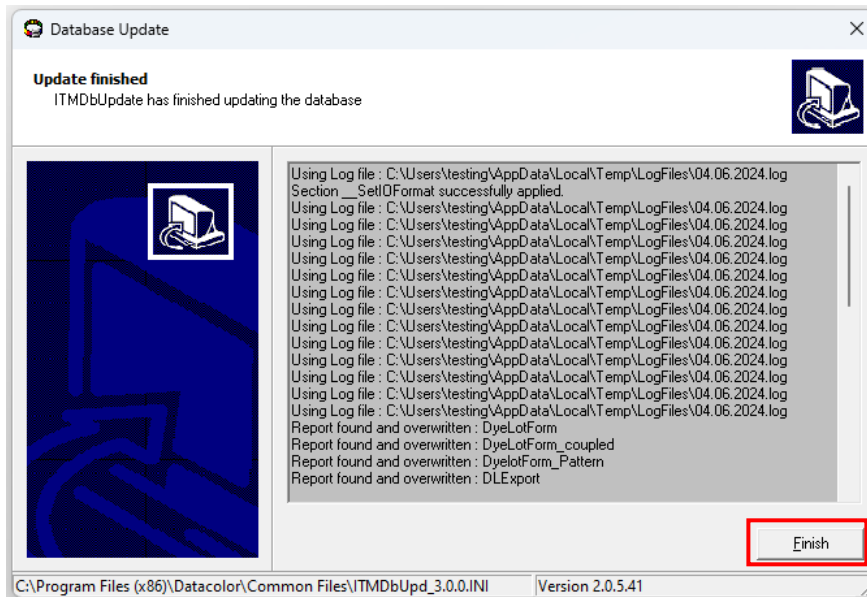
followed by installing the instrument drivers:



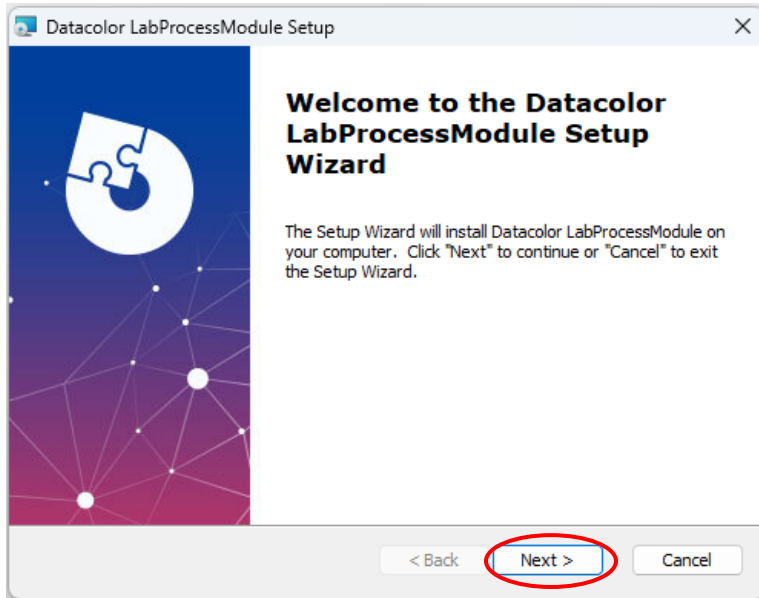
followed by selecting the correct language:



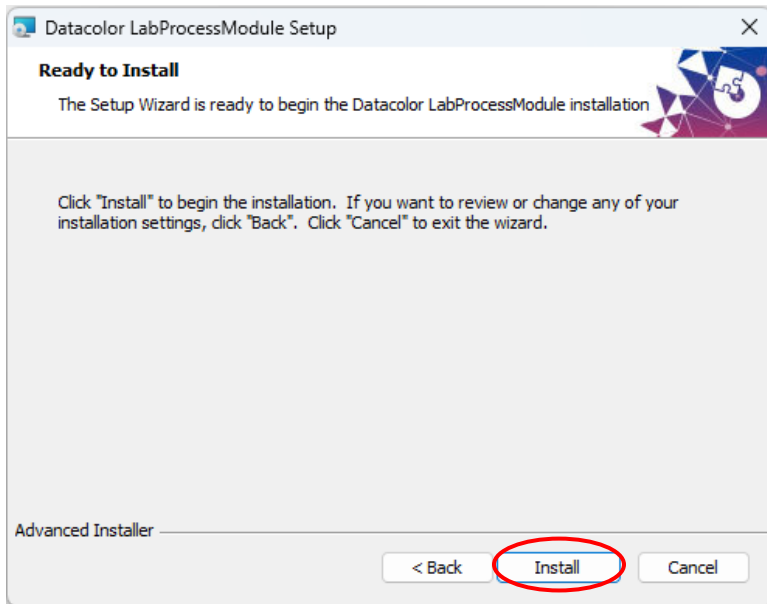
followed by a database update:



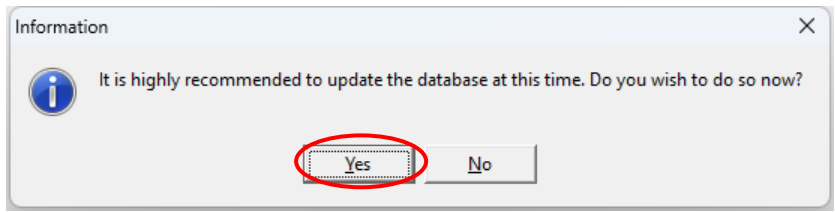
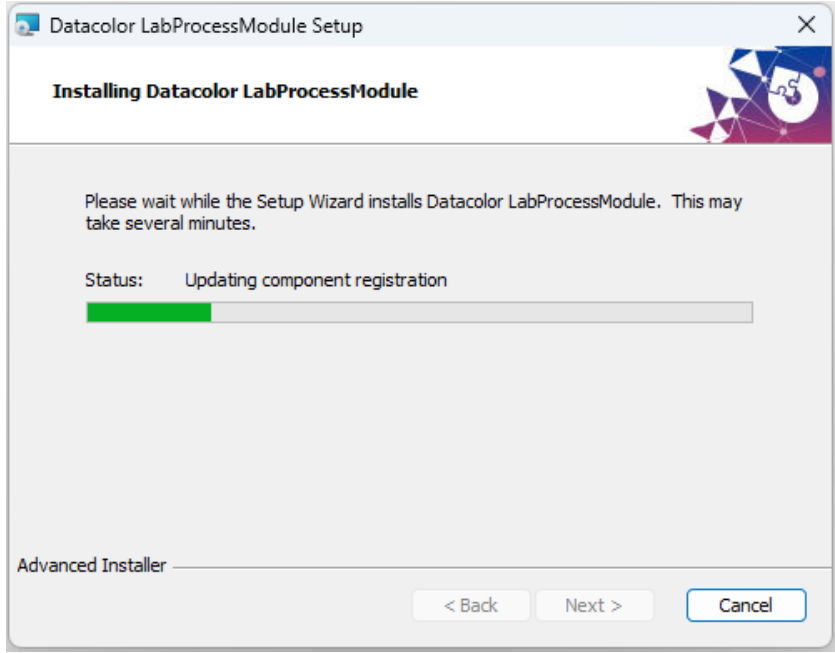
followed by installing the LabProcessModule Setup:



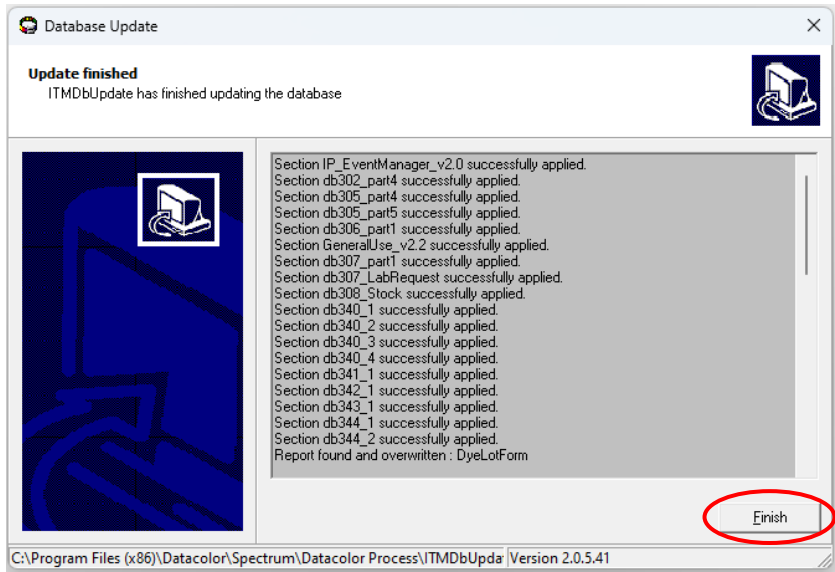
Click "Next".



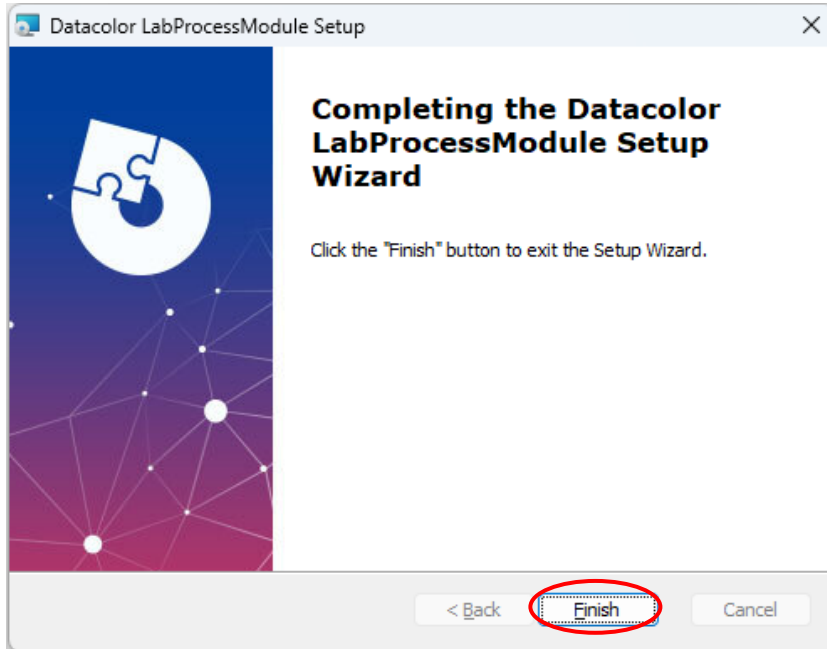
Click "Install"



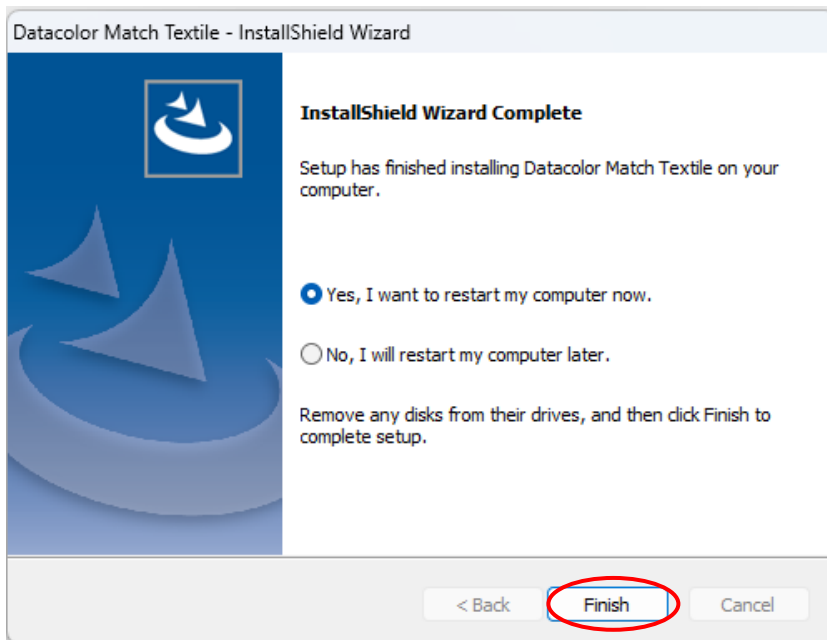
Click "Yes"



Click "Finish"



Click **“Finish”**



Click **“Finish”**

Datacolor MATCH ^{TEXTILE} is now installed on your system!